



Autumn ANGUS CLASSIC

SATURDAY, SEPTEMBER 4, 2021
MAPLEHILL AUCTIONS, HANOVER, ONTARIO

WELCOME TO AAC

To start off, welcome to the 2021 edition of the annual AAC sale. This event has become a nationally recognized sale that showcases some of Ontario's finest seed stock. This year is no different then any other as we have a power stacked offering that will rival any other offering in the land. The 80 some lots feature the best of their respective herds where only the top quality has been selected.

I'd ask you to please take your time and study through this catalogue, countless hours of work has been put into it and we certainly feel the offering is worthy of consideration. The cow families represented in this year sale are like none other in years past. The Balckcap May's are as well known in the Angus fraternity as any. It just so happens we have two maternal sisters at the start of the catalogue that have a bright future ahead with the bred heifer being the first ever registered America progeny in Canada! The cow calf pair section has never been as strong, particularly with the bull calves that are on offer. They are the cream of the crop and have become manly looking herdbulls. Heifer calves that have genetic opportunity that are endless with as current of pedigree as you can obtain.

Annually this sale has been noted for the strong bred heifer section within it. This year we feel we've never done better in this department . Heifers that are sired by the who's who in the industry with services that are popular and marketable. Their have been multiple bred females over the past few years from this sale that have gone on to write history for some of the

most notable programs on the continent, so please give heavy consideration to this exceptional pen of females!

Again this year in more volume is our pregnant recip offering. The genetic potential here is absolutely phenomenal. The donor dams represented are hard to come by and mated to the most rare and valuable bulls on the planet. Buckle your seat belt and get some of these exciting genetics in your program and drive straight ahead.

To conclude, plan to be in Hanover for the labour day weekend for this great event that is full of fun and good Angus fellowship. Keep in mind the Premier Falls View show is only 45 mins away at Premier Livestock and will be one of the best cattle shows in the Eastern part of this country. The purebred cattle business is electric, never before have we seen high quality genetics have so much demand. This is not a fad... it's here to stay! I strongly encourage your participation within this event if possible as I truly believe genetics from this offering will be an absolute upside to your own program. All of us at T Bar C are enthusiastic of not only the Angus breed, but the people involved in it. Please don't hesitate to call any of us for assistance in pursuing cattle in this sale or any future sales on our calendar. Let's take the fall of 21 back to the way purebred cattle functions should be and make it as good as ever!

BEN WRIGHT
519-374-3335

P.S. Please book rooms early to insure availability, if assistance is needed, don't hesitate to call. Please follow our Facebook page and buyagro.com for updates closer to sale week.



Autumn

ANGUS CLASSIC

SATURDAY, SEPTEMBER 4, 2021

MAPLEHILL AUCTIONS, HANOVER, ON
SALE BEGINS AT 1:00 PM

SALE DAY CONTACTS

AUCTIONEER

Chris Poley 306-220-5006

SALE STAFF

Ben Wright 519-374-3335
Carl Wright 519-369-7489
Shane Michelson 403-363-9973
Don Oberg 780-678-6926

MAPLEHILL AUCTIONS

519-379-1370

SALE MANAGEMENT

T Bar C Cattle Co. Ltd. 306-933-4200

TRUCKING

H.S. Knill Co. Ltd. 877-442-3106

ONLINE BIDDING

DLMS

Mark Shologan 780-699-5082

ACCOMMODATIONS

Best Western Plus

Walkerton, ON 226-436-3030

Traveller's Inn Motel

Hanover, ON 519-364-1911 or 800-801-8398

Grey Rose Suites

Hanover, ON 519-364-2600



CHRIS POLEY
306-220-5006



SHANE MICHELSON
403-363-9973



BEN WRIGHT
519-374-3335

SALE MANAGEMENT

T BAR C CATTLE CO. LTD.

OFFICE: 306-933-4200

INFO@TBARC.COM

WWW.TBARC.COM

**VIEW THE CATALOGUE
ONLINE AT BUYAGRO.COM**





Cat **1 REHORST BLACKCAP MAY 073H**

FEMALE // 2173993 // RHFL 073H // 26/03/2020

S A V PRESIDENT 6847 S A V 707 RITO 9969
S A V AMERICA 8018 *X* **S A V BLACKCAP MAY 273**
 S A V MADAME PRIDE 0075 S A V MAY 2397

BW: 2.3 // WW: 69 // YW: 112 // MCE: 7.0 // MILK: 24

AI bred to S A V Final Answer 0035 on May 3, 2021. Ultrasound safe to AI date at 60 days.

- The first ever America bred female offered in Canada
- From the highly regarded Blackcap May's, this female's genetic potential is of tremendous upside
- Her donor dam is writing her own novel of success
- Mated to FA for calving ease and high maternal traits
- This female has as much potential as we have ever produced
- We are wanting to, if possible, retain embryos off this female. Please contact us or sale management to further discuss

Offered By: Rehorst Farms Ltd.



S AV Blackcap May 273 - Dam



S A V America 8018 - Sire



2 SIEBRING BLACKCAP MAY 631

FEMALE // 2014250 // IMP 1631D // 16/01/2016

S A V HARVESTOR 0338
S A V INTERNATIONAL 2020
 S A V EMBLYNETTE 5483



S A V 707 RITO 9969
S A V BLACKCAP MAY 273
 S A V MAY 2397

BW: 3.3 // WW: 63 // YW: 110 // MCE: 1.0 // MILK: 25
 AI bred to S A V Rainfall 6846 on May 2, 2021. The pregnancy has been sexed female.

Say hello to your next donor! 631 is an own daughter of S A V Blackcap May 273 brood cow extraordinaire. A sister by S A V Final Answer sold for \$300,000 half interest in the 2018 Siebring Sale to ZWT Ranch. 273's daughters were the highlight of the North Perth dispersal in 2019. 273 being a direct daughter of S A V May 2397 and sister to the household name Blackcap May 4136. Blackcap May 631 has developed into an absolute freight train for us, she is moderate in size and as deep and wide as any cow to be sold in any sale, anywhere, at any time. After buying her in 2019 she produced 26 embryos via IVF and has four beautiful daughters at Meadow Bridge. Her 2021 S A V Rainfall heifer calf is among our very best.

Offered By: Meadow Bridge Angus



Siebring Blackcap May 631



Siebring Blackcap May 473 - Maternal Sister



S A V Blackcap May 273 - Dam



Cut **3** NORTH PERTH BLACKCAP MAY 413

FEMALE // 1831351 // RIW 413B // 11/01/2014

S A V IRON MOUNTAIN 8066
S A V ANGUS VALLEY 1867
S A V MAY 2397



S A V NET WORTH 4200
CHAMPION HILL MAY 7119
S A V MAY 7238

BW: 1.2 // WW: 40 // YW: 74 // MCE: 6.0 // MILK: 23

AI bred to S A V Resource 1441 on May 20, 2021. The pregnancy has been sexed female.

413 just keeps getting better with age! Her dam by S A V Net Worth 4200 is a sister to the legendary S A V 004 Density 4336 and S A V Blackcap May 5530. We could write a book on the accomplishments of this maternal line. 413 has developed into a donor quality female. She has a Cutting Edge son working at Andy and Bonnie Deweerd in Ontario and another Cutting Edge son at Berry Creek Colony, AB, this cow is a money maker! She is very feminine with a huge rib structure and a post card perfect udder.

Offered By: Meadow Bridge Angus



S A V 004 Density 4336 - Brother to Dam of Lot 3



S A V Blackcap May 5530 - Sister to Dam of Lot 3



Lot **4** **MBA BLACKCAP MAY 824**

FEMALE // 2016267 // MBA 824F // 17/02/2018

S A V REGISTRY 2831
S A V SENSATION 5615
 S A V BLACKCAP MAY 4136



S A V ANGUS VALLEY 1867
NORTH PERTH BLACKCAP MAY 413
 CHAMPION HILL MAY 7119

BW: 1.8 // WW: 43 // YW: 78 // MCE: 1.0 // MILK: 17
 AI bred to S A V Renovation 6822 on July 6, 2021.

824 is a beautiful young S A V Sensation daughter, and she is the image of her mother at the same age. Her udder is shallow and well attached and she has near perfect feet and legs. A cow to keep around for the long haul and a true testament to the breeding potential of her mother.
Offered By: Meadow Bridge Angus



S A V Sensation 5615 - Sire of Lot 4



S A V Renovation 6822 - Service Sire of Lot 4



5A

Cat 5

JL BLACKBIRD 5296

FEMALE // 1842625 // JLMB 296C // 02/03/2015

RITO 707 OF IDEAL 3407 7075
S A V ELIMINATOR 9105
 S A V ABIGALE 5646



SITZ UPWARD 307R
JL BLACKBIRD 1231
 KBJ BLACKBIRD 484P

BW: 4.1 // WW: 56 // YW: 115 // MCE: 0.0 // MILK: 32

AI bred to S A V Resource 1441 on May 20, 2021. The pregnancy has been sexed female.

Blackbird 5296 is as honest and hardworking a cow as we own. She is a beautifully designed functional female that is balanced in phenotype and numbers the WW ratio on her first four calves is 114! This Eliminator daughter has a beautiful front third tremendous chest width that carries right back to her pins. Her udder is flawless and walks on perfect feet at +32 her milk EPD is top 1% of breed. Blackbird will be a fantastic addition to any program.

Offered By: Meadow Bridge Angus

Cat 5A

MBA BLACKBIRD 127

FEMALE // 2194364 // MBA 127J // 16/03/2021

COLEMAN CHARLO 0256
S A V RAINDANCE 6848
 S A V BLACKCAP MAY 4136

O C C PAXTON 730P
 BOHI ABIGALE 6014
 S A V 8180 TRAVELER 004
 S A V MAY 2397

BW: 2.1 // WW: 61 // YW: 119 // MCE: 5.0 // MILK: 28

A beautiful Raindance heifer she is the spitting image of her mother! the sire line up of Raindance x Eliminator x Upward x New Design gives this big ribbed broody calf a great head start in the Angus world.

Offered By: Meadow Bridge Angus



5



Cat **6 NORFOLK BLACKCAP MAY 42H**

FEMALE // 2186964 // NOR 42H // 07/12/2020

S A V PRESIDENT 6847
S A V AMERICA 8018
 S A V MADAME PRIDE 0075



S A V CUTTING EDGE 4857
S A V BLACKCAP MAY 6340
 S A V BLACKCAP MAY 1433

BW: 4.4 // WW: 74 // YW: 132 // MCE: 4.0 // MILK: 12
Sells Open

Here's a chance to own one of the first born registered S A V America 8018 heifers in Canada. Her pedigree is stacked with proven genetics - top to bottom. Her dam is one of our favorite cows - S A V Blackcap May 6340. She's a moderate, fleshy, heavy performer whose dam (S A V Blackcap May 1433) came out of the same flush as Resource. 1433 has over 15 daughters retained in the S A V herd and 30 progeny averaging over \$13,000 in past S A V sales, not including the 2021 sale. The possibilities are endless with this heifer and we think she's one of the most exciting breeding pieces that we have ever generated at our farm.
Offered By: Norfolk Cattle



S A V America 8018 - Sire



S A V Blackcap May 1433 - Maternal Granddam



S A V Blackcap May 6340 - Dam



7

Cot **7** PREMIER NP PRIDE 932

FEMALE // 2086827 // PLS 932G // 02/04/2019

PLAINVIEW LUTTON E102
OHL CHECK BOOK 0187C
O H L ANGEL 7171

X S A V NET WORTH 4200
PREMIER NP PRIDE 432
BABY BLACK LOOKIN GREAT

BW: 3.8 // WW: 48 // YW: 80 // MCE: 6.0 // MILK: 28

AI bred to OHL Gunner on May 18, 2021. Pasture exposed to North Perth Landower from May 24 to August 24, 2021.

Offered By: North Perth Angus 2020

Cot **7A** NORTH PERTH 2020 PRIDE 101

FEMALE // 2202608 // REW 101J // 06/02/2021

LD CAPITALIST 316
OHL GUNNER 7263G
LAZY H BAR FOREVER LADY 793

CONNEALY CAPITALIST 028
LD DIXIE ERICA 2053
PLUM CREEK REFRESH 461A
LAZY H BAR FOREVER LADY 317

PE: BW: 3.3 // WW: 69 // YW: 112 // MCE: 9.5 // MILK: 29

Offered By: North Perth Angus 2020



7A



Premier Pride 015 - \$41,000 high selling female in Falls View 2020 to Gavin Cattle Co. Maternal sister to Lot 7



OHL Gunner 7263G



8A

Cat 8

MAPLE LINE SOPHIA 1F

FEMALE // 2071450 // IRA 1F // 01/01/2018

G A R GRID MAKER
S A V BISMARCK 5682
S A V ABIGALE 0451



VISION UNANIMOUS 1418
WESTWIND MARCELLA SOPHIA 1D
WESTWIND MARCELLA 5W

BW: 2.9 // WW: 62 // YW: 110 // MCE: 9.0 // MILK: 21

AI bred to S A V President 6847 on April 21, 2021. Exposed to Rehorst Tinge EXT 807F from April 28 to September 3, 2021.

- Tremendous Bismarck female who was a past AAC high seller
- So much future to this young female, her heifer calf at side assures of her capabilities
- Bred back the same way to do it all over again

Offered By: Rehorst Farms Ltd.

Cat 8A

REHORST PRESIDENT SOPHIE 3J

FEMALE // 2208130 // RHFL 3J // 02/01/2021

COLEMAN CHARLO 0256
S A V PRESIDENT 6847
S A V BLACKCAP MAY 4136

O C C PAXTON 730P
BOHI ABIGALE 6014
S A V 8180 TRAVELER 004
S A V MAY 2397

BW: 3.3 // WW: 70 // YW: 118 // MCE: 5.0 // MILK: 21

- We truly believe one of the best we've ever had around the farm
- Super stout, good looking and gentle natured with a 118 YW Epd
- Incredible in the flesh, the type of female that can elevate any herd

Offered By: Rehorst Farms Ltd.



8



9

Lot **9** REHORST ELIMINATOR JUNE 526C

FEMALE // 1886652 // RHFL 526C // 06/01/2015

RITO 707 OF IDEAL 3407 7075
S A V ELIMINATOR 9105
 S A V ABIGALE 5646

X **JL JUNE 1070**
 JL JUNE 06 40

BW: 2.6 // WW: 60 // YW: 116 // MCE: 3.0 // MILK: 29

AI bred to S A V America 8018 on May 21, 2021. Exposed to Rehorst Tinge EXT 807F from May 28 to September 3, 2021.

- Phenomenal eye appealing female backed by one of the best cows ever around here June 1070Y
- Beautifully in her design & mated to America this female should be on your list
- Maternal sisters sell in this sale as Lots 10, 11, 34, and 38 A-C

Offered By: Rehorst Farms Ltd.

Lot **9A** REHORST ELIMINATOR JUNE 35J

FEMALE // 2208177 // RHFL 35J // 16/03/2021

JL ELIMINATOR 4295
REHORST ELIMINATOR 869F
 REHORST ELIMINATOR JUNE 502C

S A V ELIMINATOR 9105
 JL BELLE 0180
 S A V ELIMINATOR 9105
 JL JUNE 1070

BW: 2.0 // WW: 58 // YW: 113 // MCE: 1.0 // MILK: 31

Offered By: Rehorst Farms Ltd.



9A

10



Rehorst Eliminator June 534C - Full sister to Lots 9 and 10. She brought \$15,000 to Otter Creek Farms in AAC 2016



10A

Cat **10** REHORST ELIMINATOR JUNE 525C

Cat **10A** REHORST RAINMASTER 19J

FEMALE // 1868200 // RHFL 525C // 03/01/2015

MALE // APPLIED FOR // RHFL 19J // 08/02/2021

RITO 707 OF IDEAL 3407 7075
S A V ELIMINATOR 9105
 S A V ABIGALE 5646

X SITZ UPWARD 307R
JL JUNE 1070
 JL JUNE 06 40

COLEMAN CHARLO 0256
S A V 654X RAINMASTER 6849
 S A V BLACKCAP MAY 4136

O C C PAXTON 730P
 BOHI ABIGALE 6014
 S A V 8180 TRAVELER 004
 S A V MAY 2397

BW: 3.3 // WW: 64 // YW: 125 // MCE: 0.0 // MILK: 30

PE: BW: 2.8 // WW: 67 // YW: 123 // MCE: -2.0 // MILK: 27

AI bred to S A V Bloodline 9578 on April 21, 2021. Exposed to Rehorst Tinge EXT 807F from April 28 to September 3, 2021.

- Eliminator females are incredibly maternal and always have amazing udders
- Another June 1070Y daughter that has many sisters selling in this sale
- Top 1% for YW and milk

- Big powerful Rainmaster with a large 123 YW EPD
- The maternal lineage of June 1070 will insure longevity
- Ideal herdsire from every aspect
- Eligible to be fed over the winter at the Gilchrist Farm Bull Center

Offered By: Rehorst Farms Ltd.

Offered By: Rehorst Farms Ltd.



10



11A

Cat **11 REHORST SENSATION JUNE 916G**

FEMALE // 2164648 // RHFL 916G // 02/01/2019

S A V REGISTRY 2831
S A V SENSATION 5615
 S A V BLACKCAP MAY 4136



SITZ UPWARD 307R
JL JUNE 1070
 JL JUNE 06 40

BW: 2.4 // WW: 62 // YW: 117 // MCE: 5.5 // MILK: 25

AI bred to S A V America 8018 on April 1, 2021. Exposed to Rehorst Tinge EXT 807F from April 8 to September 3, 2021. Ultrasound safe to AI date at 35 days.

- These June 10Y offspring are the type of cattle you want
- Two year old due early to America
- Phenomenal EPDs with maternal all the way through her pedigree
- Many sisters sell in this very sale
- Her mother has over 30 registered progeny

Offered By: Rehorst Farms Ltd.

Cat **11A REHORST RAINFALL JUNE 5J**

FEMALE // 2208141 // RHFL 5J // 04/01/2021

COLEMAN CHARLO 0256
S A V RAINFALL 6846
 S A V BLACKCAP MAY 4136

O C C PAXTON 730P
 BOHI ABIGALE 6014
 S A V 8180 TRAVELER 004
 S A V MAY 2397

PE: BW: 1.3 // WW: 61 // YW: 114 // MCE: 6.3 // MILK: 27

- Rainfall progeny are the type of cattle we strive to produce
- Beautifully numbered and big belly make her an excellent cow prospect

Offered By: Rehorst Farms Ltd.



11



12A



S A V America 8018 - Service Sire of Lot 12

Lot 12

JL ERICA 6154

FEMALE // 1910141 // JLMB 154D // 28/01/2016

RITO 707 OF IDEAL 3407 7075 S A V 004 TRAVELER 5658
 S A V RESOURCE 1441 JL EROCA 9219
 S A V BLACKCAP MAY 4136 JL EROCA 07195

BW: 4.5 // WW: 63 // YW: 123 // MCE: 1.0 // MILK: 23

AI bred to S A V America 8018 on May 12, 2021. Exposed to Rehorst Tinge EXT 807F from May 19 to September 3, 2021.

- Buy all the Resource females you can
- Mated to the \$1.5 million America
- Big 123 YW EPD stemming from one of the greatest herds ever assembled, Johnson Livestock

Offered By: Rehorst Farms Ltd.

Lot 12A REHORST ELIMINATOR ERICA 29J

FEMALE // 2208170 // RHFL 29J // 01/03/2021

JL ELIMINATOR 4295 S A V ELIMINATOR 9105
 REHORST ELIMINATOR 869F JL BELLE 0180
 REHORST ELIMINATOR JUNE 502C S A V ELIMINATOR 9105
 JL JUNE 1070

BW: 3.0 // WW: 59 // YW: 116 // MCE: 0.0 // MILK: 28

- Eliminator grand daughter that is a young age and backed by a superior mother
- Fancy made and correct angles make you look at her often

Offered By: Rehorst Farms Ltd.



12



13A

Cat **13** LLB YOUNG LUCY 967E

FEMALE // 1985034 // LLB 967E // 23/02/2017

S A V FINAL ANSWER 0035
OSU FINAL EXAM 3139
 OSU EMPRESS 1105

X BNC GAME CHANGER 1Y
BLAIR'S HEROINE 354C
 MVF HEROINE 163U

BW: 2.9 // WW: 61 // YW: 104 // MCE: 6.0 // MILK: 17

AI bred to S A V America 8018 on May 12, 2021. Exposed to Rehorst Tinge EXT 807F from May 19 to September 3, 2021.

- Typical LLB female, good looking and raising a superior calf
- Final Exam progeny have been the top of the LLB herd, which is the largest Angus program in Canada
- Imagine her America baby inside to come early next year

Offered By: Rehorst Farms Ltd.

Cat **13A** REHORST PRESIDENT LUCY 16J

FEMALE // 2208163 // RHFL 16J // 21/01/2021

COLEMAN CHARLO 0256
S A V PRESIDENT 6847
 S A V BLACKCAP MAY 4136

O C C PAXTON 730P
 BOHI ABIGALE 6014
 S A V 8180 TRAVELER 004
 S A V MAY 2397

BW: 3.3 // WW: 69 // YW: 115 // MCE: 3.5 // MILK: 19

- Proven pedigree out of an ideal dam with a sister selling as Lot 14 that is as good as we can do
- Capable in every way you look at her, this female has the credentials to become a lead donor female
- Calm natured and extremely attractive

Offered By: Rehorst Farms Ltd.



14



S A V President 6847 - Sire of Lot 13A



S A V America 8018 - Service Sire of Lot 13

13



Lot **14** REHORST CATALYST LUCY 015H

FEMALE // 2160413 // RHFL 015H // 09/01/2020

S A V RESOURCE 1441 OSU FINAL EXAM 3139
 S A V CATALYST 6704 *X* LLB YOUNG LUCY 967E
 S A V EMBLYNETTE 0491 BLAIR'S HEROINE 354C

BW: 3.0 // WW: 63 // YW: 113 // MCE: 5.0 // MILK: 20

AI bred to S A V Rainfall 6846 on April 1, 2021. Exposed to Rehorst Tinge President 940G from May 22 to September 3, 2021. Ultrasound safe to AI date at 35 days.

- Our pick of the breds, we've tried to do better but don't think we can after seeing 15H... she's remarkable
- Catalyst offers extreme phenotype and matched with an exceptional LLB female
- Safe to the heifer approved Rainfall, who has surpassed all expectations

Offered By: Rehorst Farms Ltd.



S A V Catalyst 6704 - Sire of Lot 14



S A V Rainfall 6846 - Service Sire of Lot 14



15A



S A V President 6847 - Sire of Lot 15A



S A V America 8018 - Service Sire of Lot 15

Cat **15 WESTWIND ELINE EMMY 30C**

FEMALE // 1879311 // WEST 30C // 02/02/2015

S A V HERITAGE 6295
S A V HARVESTOR 0338
 S A V EMBLYNETTE 7749



DOUBLE AA OLD POST BANDOLIER
WESTWIND ELINE EMMYLOU 7Y
 ANGUS HILLS ELINE ERICA 55R

BW: 5.3 // WW: 56 // YW: 99 // MCE: 8.0 // MILK: 23

AI bred to S A V America 8018 on June 10, 2021. Exposed to Rehorst Tinge EXT 807F from June 17 to September 3, 2021.

- Big powerful female who has milk and the Harvestor thickness he's noted for
- America semen is averaging \$500 per straw on the semen sold in Canada
- Calm natured with eye appeal

Offered By: Rehorst Farms Ltd.

Cat **15A REHORST PRESIDENT EMMY 45J**

FEMALE // 2208178 // RHFL 45J // 12/04/2021

COLEMAN CHARLO 0256
S A V PRESIDENT 6847
 S A V BLACKCAP MAY 4136

O C C PAXTON 730P
 BOHI ABIGALE 6014
 S A V 8180 TRAVELER 004
 S A V MAY 2397

BW: 4.5 // WW: 67 // YW: 112 // MCE: 4.5 // MILK: 22

- Younger aged President that sure does have a look
- Her big barrelled mother will insure body, width and maternal traits

Offered By: Rehorst Farms Ltd.



15



16A

Cat **16** LLB BLUE LASS 637C

FEMALE // 1871694 // LLB 637C // 20/03/2015

S A V 707 RITO 9969
REMITALL F REACTOR 40A
 LLB NELLIE PRIDE 229U

X

J P D GALILEO
J P D BLUE LASS 21N
 LLB BLUE LASS 242L

BW: 3.7 // WW: 54 // YW: 87 // MCE: -1.0 // MILK: 16

AI bred to S A V America 8018 on April 1, 2021. Exposed to Rehorst Tinge EXT 807F from April 8 to September 3, 2021. Ultrasound safe to AI date at 35 days.

- As perfectly structured female as you'll see
- A past LLB high seller, this Reactor daughter has everything going for her
- Due early to America, this female has donor potential and is one of our feature lots with a bred heifer selling as well

Offered By: Rehorst Farms Ltd.

Cat **16A** REHORST DEFIANT LAD 8J

MALE // 2208147 // RHFL 8J // 06/01/2021

YOUNG DALE HI DEFINITION 185B
YOUNG DALE DEFIANCE 199F
 YOUNG DALE GRACE 126Z

PF HOOVER DAM 041
 BLACK HAMCO COUNTESS 417T
 YOUNG DALE PANARAMA 66T
 YOUNG DALE GRACE 19T

BW: 3.7 // WW: 59 // YW: 98 // MCE: 4.0 // MILK: 20

- Buy a bull that's backed by a superior mother, just look at his big broad mother that is absolutely fantastic
- Big pay weight bull that is mature and stout
- Defiance is outcross and adds hair and length to his offspring
- Eligible to be fed over the winter at the Gilchrist Farm Bull Center

Offered By: Rehorst Farms Ltd.



16



17A

Cat **17 KEMP BROTHERS ROSEBUD 46G**

FEMALE // 2096434 // KBF 46G // 26/01/2019

S A V RENOWN 3439
S A V RENOVATION 6822
 S A V MADAME PRIDE 0151

KEMP BROTHERS WARRANT 5W
KEMP BROTHER'S MS ROSEBUD 18Y
 KEMP MISS ROSEBUD 4U

BW: 2.9 // WW: 57 // YW: 105 // MCE: 4.5 // MILK: 25

AI bred to S A V America 8018 on April 1, 2021. Exposed to Rehorst Tinge EXT 807F from April 8 to September 3, 2021. Ultrasound safe to AI date at 35 days.

- Beauty of a two year old that came from one of the nicest cow herds in the province, Kemp Bros.
- Ideal size and raising a whale of a bull calf that has a bright future. Renovation daughters will be a mainstay for a long time
- Bred back early to America, these are the type of females you want in your herd

Offered By: Rehorst Farms Ltd.

Cat **17A REHORST RENO COLOSSAL 2J**

MALE // 2208128 // RHFL 2J // 02/01/2021

LD CAPITALIST 316
MUSGRAVE 316 COLOSSAL 137
 MUSGRAVE LADY BARBARA 545

CONNEALY CAPITALIST 028
 LD DIXIE ERICA 2053
 MUSGRAVE BIG SKY
 MUSGRAVE LADY BARBARA 272

PE: BW: 0.6 // WW: 61 // YW: 107 // MCE: 10.3 // MILK: 23

- An absolute stud
- Big time spread (top 2%) from BW to WW and YW
- Muscle shape galore while maintaining an excellent leg and great headed
- Serious herdsire candidate
- Eligible to be fed over the winter at the Gilchrist Farm Bull Center

Offered By: Rehorst Farms Ltd.



17



18A

Lot 18 REHORST EVENING TINGE 804F

FEMALE // 2105295 // RHFL 804F // 09/02/2018

S A V REGISTRY 2831

S A V SEEDSTOCK 4838

S A V BLACKCAP MAY 4136

JUSTAMERE 253 BADA BING 406S

JL EVENING TINGE 1250

HF EVENING TINGE 57R

BW: 4.2 // WW: 57 // YW: 98 // MCE: 4.0 // MILK: 24

AI bred to S A V Bloodline 9578 on April 1, 2021. Exposed to Rehorst Tinge EXT 807F from April 8 to September 3, 2021. Ultrasound safe to AI date at 35 days.

- A brood cow for sure, this Seedstock daughter traces to the legendary Tinges!
- Intriguing service to Bloodline will be a great investment inside this female
- Raised a great herdsire this spring now working at Parkview Angus, Alberta
- Offered By: Rehorst Farms Ltd.

Lot 18A REHORST TINGE PRESIDENT 1J

MALE // 2208126 // RHFL 1J // 02/01/2021

COLEMAN CHARLO 0256

S A V PRESIDENT 6847

S A V BLACKCAP MAY 4136

O C C PAXTON 730P

BOHI ABIGALE 6014

S A V 8180 TRAVELER 004

S A V MAY 2397

BW: 3.9 // WW: 67 // YW: 112 // MCE: 2.5 // MILK: 23

- Big performance calf with an excellent hip
- The bulls we have on offer are our best and 17A is no slouch in the pen
- Great cow family backing this big guy with a maternal brother who was a feature this Spring
- Eligible to be fed over the winter at the Gilchrist Farm Bull Center

Offered By: Rehorst Farms Ltd.



18



JL Evening Tinge 1250 - Dam of Lot 18



Rehorst Tinge Rainfall 03H - Son of Lot 18, sold in the Mid-Western Ontario Bull Sale to Parkview Farms



19A

Calf 19

JL SUSIE 7053

FEMALE // 1967133 // JLMB 53E // 19/01/2017

RITO 707 OF IDEAL 3407 7075
S A V RENOWN 3439
 S A V BLACKCAP MAY 4136

SITZ UPWARD 307R
JL SUSIE 4123
 JL SUSIE 9375

BW: 2.4 // WW: 62 // YW: 110 // MCE: 3.0 // MILK: 25

AI bred to S A V Bloodline 9578 on April 23, 2021. Exposed to Rehorst Tinge EXT 807F from April 30 to September 3, 2021.

- Royally bred from the famed Susie's at JL
- Amazingly made with a great EPD spread
- We love Renown for so many reasons, this female is striking and we are proud to offer such a breeding piece
- Renown x Upward and mated to Bloodline, think of the possibilities!
- **Offered By: Rehorst Farms Ltd.**

Calf 19A

REHORST RENOWN PRESIDENT 17J

MALE // 2208137 // RHFL 4J // 25/01/2021

COLEMAN CHARLO 0256
S A V PRESIDENT 6847
 S A V BLACKCAP MAY 4136

O C C PAXTON 730P
 BOHI ABIGALE 6014
 S A V 8180 TRAVELER 004
 S A V MAY 2397

BW: 3.0 // WW: 70 // YW: 118 // MCE: 2.0 // MILK: 23

- The paperwork to this bull excels in every way
- His perfectly designed mother enchances this calf's bright future
- Big time WW and YW, this calf will add muscle and pounds to your calves
- Eligible to be fed over the winter at the Gilchrist Farm Bull Center
- **Offered By: Rehorst Farms Ltd.**



19



20A

Lot 20 REHORST EVENING TINGE INT 748E

FEMALE // 2049182 // RHFL 748E // 01/02/2017

S A V HARVESTOR 0338
S A V INTERNATIONAL 2020
S A V EMBLYNETTE 5483



S A V ELIMINATOR 9105
JL EVENING TINGE 2280
HF EVENING TINGE 57R

BW: 4.1 // WW: 57 // YW: 96 // MCE: -1.0 // MILK: 26

AI bred to S A V America 8018 on April 1, 2021. Exposed to Rehorst Tinge EXT 807F from April 8 to September 3, 2021. Ultrasound safe to AI date at 35 days.

- Powerful International that is the producing kind
- Her donor dam mother sells as Lot 29
- The Evening Tinge cow family mated to America should be a home run
- Just study her bull calf selling!

Offered By: Rehorst Farms Ltd.

Lot 20A REHORST DEFIANCE 4J

MALE // 2208137 // RHFL 4J // 04/01/2021

YOUNG DALE HI DEFINITION 185B
YOUNG DALE DEFIANCE 199F
YOUNG DALE GRACE 126Z

PF HOOVER DAM 041
BLACK HAMCO COUNTESS 417T
YOUNG DALE PANARAMA 66T
YOUNG DALE GRACE 19T

BW: 3.9 // WW: 61 // YW: 102 // MCE: 4.0 // MILK: 25

- This calf separates the men from the boys.
- Stout, deep, perfect leg, attractive headed and muscle to no end, this is a big time herdsire in the making
- When we saw Defiance as a 3 year old we were so happy we used him. Unlimited potential to this rascal
- Eligible to be fed over the winter at the Gilchrist Farm Bull Center

Offered By: Rehorst Farms Ltd.



20



JL Evening Tinge 2280 - Dam of Lot 20, she sells as Lot 30!



Young Dale Defiance 199F - Sire of Lot 20A



21A

Lot **21** REHORST EVENING TINGE 841F

FEMALE // 2178933 // RHFL 841F // 09/02/2018

SITZ TRAVELER 8180
S A V FINAL ANSWER 0035
S A V EMULOUS 8145



S A V NET WORTH 4200
REHORST EVENING TINGE 690D
JL EVENING TINGE 2280

BW: 1.9 // WW: 65 // YW: 114 // MCE: 5.0 // MILK: 29

AI bred to S A V America 8018 on May 12, 2021. Exposed to Rehorst Tinge EXT 807F from May 19 to September 3, 2021.

- Hard working FA daughter that has a big future ahead her
- Extremely ideal EPD profile and bred for profit to America!

Offered By: Rehorst Farms Ltd.

Lot **21A** REHORST TINGE PRESIDENT 11J

MALE // 2208149 // RHFL 11J // 11/01/2021

COLEMAN CHARLO 0256
S A V PRESIDENT 6847
S A V BLACKCAP MAY 4136

O C C PAXTON 730P
BOHI ABIGALE 6014
S A V 8180 TRAVELER 004
S A V MAY 2397

BW: 2.8 // WW: 71 // YW: 120 // MCE: 3.0 // MILK: 25

- Low birth with performance, this calf checks all the boxes
 - Look at that 120 YW, this big stout fella is impressive
 - Very early maturing, this calf will do a bunch of good to your cows!
 - Eligible to be fed over the winter at the Gilchrist Farm Bull Center
- Offered By: Rehorst Farms Ltd.



21



S A V Final Answer 0035 - Sire of Lot 21



S A V President 6847 - Sire of Lot 21A



22A

Lot 22 REHORST EVENING TINGE 765E

FEMALE // 2049184 // RHFL 765E // 04/03/2017

S A V REGISTRY 2831
S A V SEEDSTOCK 4838
S A V BLACKCAP MAY 4136

S A V ELIMINATOR 9105
JL EVENING TINGE 3618
HF EVENING TINGE 57R

BW: 2.3 // WW: 51 // YW: 87 // MCE: 3.0 // MILK: 25

AI bred to S A V Bloodline 9578 on April 1, 2021. Exposed to Rehorst Tinge EXT 807F from April 8 to September 3, 2021. Ultrasound safe to AI date at 35 days.

- Her dam 3618 was as good of a female as we have ever owned
- The Evening Tinges produced and were amongst the most popular at the historic JL dispersal
- Bloodline service will only increase her value

Offered By: Rehorst Farms Ltd.

Lot 22A REHORST EVENING TINGE 7J

FEMALE // 2208146 // RHFL 7J // 06/01/2021

COLEMAN CHARLO 0256
S A V PRESIDENT 6847
S A V BLACKCAP MAY 4136

O C C PAXTON 730P
BOHI ABIGALE 6014
S A V 8180 TRAVELER 004
S A V MAY 2397

PE: BW: 3.0 // WW: 64 // YW: 106 // MCE: 2.0 // MILK: 23

- These President daughters sure have grown on us
- Her grandmother was one of the best cows we owned
- Big barrelled, loads of look and proven data, the kind you want in your pasture

Offered By: Rehorst Farms Ltd.



22



S A V Bloodline 9578 - Service Sire of Lot 22



JL Evening Tinge 3618 - Dam of Lot 22



© Buschbeck

23A

Lot **23** 7 TOWERS QUEEN 211F

FEMALE // 2043390 // TVFS 211F // 11/02/2018

SANDY BAR ADVANTAGE 43M
HF KODIAK 5R
 WILBAR RUBY 955N



ANGUS KNOLL ULTIMATE
ANGUS KNOLL QUEENETTE 7Z
 ANGUS KNOLL QUEENETTE 1R

BW: 0.1 // WW: 36 // YW: 64 // MCE: 9.0 // MILK: 18

AI bred to Peak Dot Outlook 271C on March 20, 2021.

Queen 211F is a long bodied, broody female. She is sired by HF Kodiak 5R. Kodiaks dominating characteristics have injected Queen with a beautiful udder, quality of foot and a feminine shoulder. Queen is shaping up to have a great career producing herd sires and replacement females a like with long term functionality and performance. We have bred Queen to the rare Peak Dot Outlook 271C who has sired three of the four progeny in Canada here on First Line. We developed two of his sons 8G, and 9H and have been very impressed with their massiveness and strength, degree of muscling and importantly their scrotal development. Both of these sons are currently working other cow herds.

Offered By: First Line Angus

Lot **23A** FIRST LINE QUEEN 9J

FEMALE // 2199780 // FLA 9J // 03/01/2021

S A V RESOURCE 1441
MAR RESPOND 1734
 MAR UPWARD PRECISION 778

RITO 707 OF IDEAL 3407 7075
 S A V BLACKCAP MAY 4136
 SITZ UPWARD 307R
 MAR PRECISION 328 WINDY 441

BW: 2.8 // WW: 54 // YW: 98 // MCE: 5.0 // MILK: 21

Queen 9J is another standout in this year's calf crop in both her type and kind but also in her growth. 9J has really impressed us with her tremendous length of side, the muscle expression in her hip and the femininity in her front end. Her sire MAR Respond always pleases us with his added shape and muscle and his ability to maintain frame size and angularity in his daughters. If you are looking for added frame in your program, 9J will be worth a good look on sale day. Vaccinated with BovaShield FP5 on August 1, 2021.

Offered By: First Line Angus



© Buschbeck

23



© Buschbeck

24A

24 FIRST LINE REBECCA JEAN 23D

FEMALE // 1908926 // FLA 23D // 01/02/2016

SITZ UPWARD 307R
EXAR UPSHOT 0562B
EXAR BARBARA T020

X

SALT CREEK BOB 7003
FIRST LINE REBECCA JEAN 16Y
GLEN ISLAY ERICA 29T

BW: 2.1 // WW: 48 // YW: 87 // MCE: 10.0 // MILK: 25

AI bred to Hart Hercules 7017 on April 3, 2021

The decision to offer FLA 23D to the AAC came with a long 6 months of consideration, and as her calf 8J progressed, the harder it was to let her go. 23D is a moderate framed, extremely easy fleshing mother who stamps all of her daughters with her style and makeup. She stems from a strong maternal Glen Islay Erica cow family and will add a lot of fertility, depth of body and red meat to your program. 23D has been AI Bred on April 3, 2021 to Hart Hercules 7017, a frame score 6 Baldrige Titan son we added to our program last year. His calves have come easy, and grow very quickly.

Offered By: First Line Angus

24A FIRST LINE REBECCA JEAN 8J

FEMALE // 2199790 // FLA 8J // 03/01/2021

SYDGEN ENHANCE
MOGCK ENTICE
MOGCK ERICA 2255

SYDGEN EXCEED 3223
SYDGEN RITA 2618
MOGCK SURE SHOT 253
MOGCK ERICA 2162

BW: 2.3 // WW: 62 // YW: 114 // MCE: 7.0 // MILK: 27

Rebecca Jean 8J is a powerfully made daughter of MOGCK Entice and carries many of her mothers strong characteristics. She displays a mixture of style and functionality, with excellent growth and a positive disposition. 8J has been one of the standouts this year phenotypically and her EPD profile does not disappoint. Top 10% WW and top 8% YW and an excellent balance of carcass EPD'S, we think she'll leave an impression in your herd like her mother FLA 23D has done for ours. Vaccinated with BovaShield FP5 on August 1, 2021.

Offered By: First Line Angus



© Buschbeck

24



Lot **25** JL FOREVER LADY 6104

FEMALE // 1944842 // JLMB 104D // 20/01/2016

RITO 707 OF IDEAL 3407 7075 SITZ UPWARD 307R
S A V RENOWN 3439 X **JL FOREVER LADY 1280**
 S A V BLACKCAP MAY 4136 GDAR FOREVER LADY 6139

BW: 1.5 // WW: 58 // YW: 113 // MCE: 5.0 // MILK: 29

AI bred to S A V America 8018 on April 1, 2021. Exposed to Rehorst Tinge EXT 807F from April 8 to September 3, 2021. Ultrasound safe to AI date at 35 days.

- Remarkable female who is pleasure to be around and was a past \$44,000 JL high seller
- Renown daughter that doesn't miss with an excellent proven track record with flushing
- Phenomenal EPD spread with a sister who brought \$42,500 last fall to Cuddy Farms
- Two bred heifers in the offering from two different consignors!
- Due early to America, put your program in the drivers seat with this high quality donor
- Her 2021 progeny have been retained

Offered By: Rehorst Farms Ltd.



S A V Renown 3439 - Sire of Lot 25



JL Forever Lady 9078 - Full sister to Lot 25, she topped the legendary JL Dispersal to Cuddy Farms for \$42,500



26A

Lot **26A** REHORST FOREVER LADY 016H

FEMALE // 2160405 // RHFL 016H // 10/01/2020

S A V RESOURCE 1441
S A V CATALYST 6704
S A V EMBLYNETTE 0491



S A V RENOWN 3439
JL FOREVER LADY 6104
JL FOREVER LADY 1280

BW: 1.6 // WW: 61 // YW: 115 // MCE: 5.0 // MILK: 27

AI bred to S A V Rainfall 6846 on May 12, 2021. Exposed to Rehorst Tinge President 940G from May 22 to September 3, 2021. Ultrasound safe to AI date at 35 days.

Offered By: Rehorst Farms Ltd.

- Two ideal daughters of the famed donor female
- The catalyst heifer has a look we all crave with a boosting EPDs chart, bred to Rainfall
- The stunner female ties everything together in a genetic package, look at the spread and safe to Bloodline
- Two big time potential females!

Lot **26B**

FEMALE // 2156644 // LELA 3H // 07/01/2020

LD CAPITALIST 316
MUSGRAVE 316 STUNNER
MCATL BLACKBIRD 831-1378



S A V RENOWN 3439
JL FOREVER LADY 6104
JL FOREVER LADY 1280

BW: 0.9 // WW: 64 // YW: 116 // MCE: 4.5 // MILK: 27

AI bred to S A V Bloodline 9578 on April 6, 2021.

Offered By: Leela Farms

LEELA LADY 3H



26B



27

Cat **27** REHORST EVENING TINGE 787E

FEMALE // 2012114 // RHFL 787E // 01/08/2017

S A V HARVESTOR 0338
S A V INTERNATIONAL 2020
S A V EMBLYNETTE 5483



HF KODIAK 5R
HF EVENING TINGE 87W
HF EVENING TINGE 68H

BW: 3.5 // WW: 52 // YW: 88 // MCE: -1.0 // MILK: 21

Due to calve to S A V America 8018. Cow sells open with calf at side.

- Excellent International daughter stemming back to the original Tinges!
- Recently born America bull calf could turn into your next herdsire
- Sells as a pair
- Her bull calf was born on July 23, 2021 to S A V America 8018, he came easy and looks phenomenal. Birth weight of 65 lbs.

Offered By: Rehorst Farms Ltd.

Cat **28** HF EVENING TINGE 87W

FEMALE // 1511230 // HAMI 87W // 12/01/2009

SANDY BAR ADVANTAGE 43M
HF KODIAK 5R
WILBAR RUBY 955N



EXAR RITO 5072
HF EVENING TINGE 68H
ARDA EVENING TINGLE 38R

BW: 1.3 // WW: 35 // YW: 60 // MCE: 4.0 // MILK: 21

AI bred to S A V President 6847 on March 11, 2021. Exposed to Rehorst Tinge EXT 807F from March 17 to September 3, 2021.

- A real pleasure to own a top lot from Hamilton Farms. 87W is a maternal sister to the famous 57R Evening Tinge cow, designated Elite since 2015. With her youthful look, she has a lot of years left

Offered By: Rehorst Farms Ltd.



28



29



S A V Net Worth 4200 - Service sire of Lot 29



Rehorst Renown Tinge 05H - \$15,000 high seller to Leela Farms in AAC 2020. Maternal sister to Lot 29

Lot 29 LEELA PIONEER TINGE 20Z

FEMALE // 1696860 // LELA 20Z // 17/02/2012

S A V FINAL ANSWER 0035 HF FREE WHEELER 191N
 S A V PIONEER 7301 X HF EVENING TINGE 57R
 S A V BLACKBIRD 5297 HF EVENING TINGE 68H

BW: 2.5 // WW: 61 // YW: 104 // MCE: 7.0 // MILK: 28

AI bred to S A V Net Worth 4200 (sexed female semen) on February 18, 2021. Exposed to Rehorst Tinge EXT 807F from February 25 to September 3, 2021. Ultrasound safe to AI date at 60 days.

Lot 29A PACKAGE OF 2 EMBRYOS

S A V AMERICA 8018 X LEELA PIONEER TINGE 20Z

- A massive pioneer daughter who is an original 57R daughter
- Look at her last years effort in the support photo
- Sexed Net Worth service is absolutely intriguing on so many levels
- Sells with two embryos by the famous America

Offered By: Rehorst Farms Ltd.

Lot 30 JL EVENING TINGE 2280

FEMALE // 1711172 // JLMB 280Z // 20/02/2012

RITO 707 OF IDEAL 3407 7075 HF FREE WHEELER 191N
 S A V ELIMINATOR 9105 X HF EVENING TINGE 57R
 S A V ABIGALE 5646 HF EVENING TINGE 68H

BW: 2.5 // WW: 45 // YW: 76 // MCE: 3.0 // MILK: 32

AI bred to S A V America 8018 on June 10, 2021. Exposed to Rehorst Tinge EXT 807F from June 17 to September 3, 2021.

- What can we say about 2280, she has over 30 registered progeny... many in this very sale
- Proven track record with an outstanding average per flush as well
- Take her home and build your herd around her, pleasant to work with and fantastic to look at

Offered By: Rehorst Farms Ltd.



30



31

Lot **31** REHORST EVENING TINGE 819F

FEMALE // 2105281 // RHFL 819F // 01/02/2018

S A V REGISTRY 2831
S A V SENSATION 5615
 S A V BLACKCAP MAY 4136

X
 S A V ELIMINATOR 9105
JL EVENING TINGE 2280
 HF EVENING TINGE 57R

BW: 2.4 // WW: 51 // YW: 93 // MCE: 2.0 // MILK: 24

AI bred to S A V America 8018 on April 1, 2021. Exposed to Rehorst Tinge EXT 807F from April 8 to September 3, 2021. Ultrasound safe to AI date at 35 days.

- Her dam sells as Lot 28, beautiful young Sensation that is due early to America
- Her 2021 progeny is retained, these are the type of young females that will go to work for you.
- Maternal sisters sell as Lots 20, 40, and 43

Offered By: Rehorst Farms Ltd.

Lot **32** LLB QUEEN MOTHER 961G

FEMALE // 2100335 // LLB 961G // 05/02/2019

S A V REGISTRY 2831
S A V SENSATION 5615
 S A V BLACKCAP MAY 4136

X
 HF DECISIVE 56Z
RICHMOND CONCRETE ANGEL SRD40C
 RICHMOND ANGEL SRD19A

BW: 3.1 // WW: 54 // YW: 98 // MCE: 2.0 // MILK: 17

AI bred to S A V America 8018 on April 1, 2021. Exposed to Rehorst Tinge EXT 807F from April 8 to September 3, 2021. Ultrasound safe to AI date at 35 days.

- Interesting LLB female due early to none other than America
- Her mother was a past high seller in Alberta that has raised a \$20,000 herdbull this past spring to Prime Time Cattle Co.

Offered By: Rehorst Farms Ltd.



32



33

Cat 33

JL PRIDE 7133

FEMALE // 1967613 // JLMB 133E // 27/01/2017

S A V REGISTRY 2831
S A V SEEDSTOCK 4838
 S A V BLACKCAP MAY 4136

S A V FOUR SEASONS 5231
X **JL PRIDE 8104**
 HF EVENING TINGE 57R

BW: 1.5 // WW: 44 // YW: 72 // MCE: 6.0 // MILK: 19

AI bred to S A V America 8018 on May 12, 2021. Exposed to Rehorst Tinge EXT 807F from May 19 to September 3, 2021.

- 57R grand daughter coming directly from the famed JL program
- Seedstock has turned into a maternal masterpiece, this low BW female is bred to produce!

Offered By: Rehorst Farms Ltd.

Cat 34

REHORST JUNE 342A

FEMALE // 1750721 // RHFL 342A // 22/01/2013

RITO 707 OF IDEAL 3407 7075
S A V 707 RITO 1439
 S A V BLACKCAP MAY 4136

SITZ UPWARD 307R
X **JL JUNE 1070**
 JL JUNE 06 40

BW: 2.0 // WW: 49 // YW: 97 // MCE: 7.0 // MILK: 27

AI bred to S A V Net Worth 4200 (sexed female semen) on February 18, 2021. Exposed to Rehorst Tinge EXT 807F from February 25 to September 3, 2021. Ultrasound safe to AI date at 60 days.

- One of the original June 1070 daughters, who has many sisters selling in this very sale as lots Lots 10, 11, 34, and 38 A-C
- Check that service to Network, sexed!!

Offered By: Rehorst Farms Ltd.



34



35

Lot **35** LLB FOREVER LADY 664G

FEMALE // 2092684 // LLB 664G // 19/01/2019

S A V REGISTRY 2831 SOUTHLAND MAIN STREET 52W
 S A V SENSATION 5615 *X* LLB FOREVER LADY 686Z
 S A V BLACKCAP MAY 4136 REMITALL FOREVER LADY 98IT

BW: 3.0 // WW: 41 // YW: 70 // MCE: 3.0 // MILK: 16

AI bred to S A V America 8018 on May 12, 2021. Exposed to Rehorst Tinge EXT 807F from May 19 to September 3, 2021.

- Sensation two year old that traces to the exceptional Forever Lady cow family
- America service on a young female!

Offered By: Rehorst Farms Ltd.

Lot **36** LLB PRINCESS ROYAL 780G

FEMALE // 2100340 // LLB 780G // 07/02/2019

RITO 707 OF IDEAL 3407 7075 S A V DOUBLE DIGIT 2799
 S A V RESOURCE 1441 *X* JL BAROS STAR 4387
 S A V BLACKCAP MAY 4136 JL BAROS STAR 8297

BW: 3.3 // WW: 58 // YW: 103 // MCE: 4.0 // MILK: 25

AI bred to S A V America 8018 on May 21, 2021. Exposed to Rehorst Tinge EXT 807F from May 28 to September 3, 2021.

- As mentioned in a previous lot, buy all the Resource females you can
- Her 2021 progeny is being retained and bred of course to that \$500 America semen
- Ideal EPds stemming back to a solid JL female

Offered By: Rehorst Farms Ltd.



36



S A V Sensation 5615 - Sire of Lot 35



S A V Resource 1441 - Sire of Lot 36



37A

Lot **37A** REHORST PRESIDENT RUBY 24H

FEMALE // APPLIED FOR // RHFL 24H // 22/02/2020

COLEMAN CHARLO 0256
S A V PRESIDENT 6847
S A V BLACKCAP MAY 4136



S A V THUNDERBIRD 9061
JL RUBY 5003
JL RUBY 3064

PE: BW: 1.9 // WW: 68 // YW: 112 // MCE: 6.5 // MILK: 22

AI bred to Musgrave 316 Stunner on May 21, 2021. Exposed to Rehorst Tinge President 940G from May 22 to September 3, 2021.

- Two exceptional Ruby 5003 daughters
- Excellent EPD spreads with their mother being the \$20,000 top seller last year to Maple Line
- These are the type of females to build around

Offered By: Rehorst Farms Ltd.

Lot **37B** REHORST SENSATION RUBY 19H

FEMALE // APPLIED FOR // RHFL 19H // 17/01/2020

S A V REGISTRY 2831
S A V SENSATION 5615
S A V BLACKCAP MAY 4136



S A V THUNDERBIRD 9061
JL RUBY 5003
JL RUBY 3064

PE: BW: 1.2 // WW: 58 // YW: 103 // MCE: 7.0 // MILK: 19

AI bred to S A V Rainfall 6846 on April 1, 2021. Exposed to Rehorst Tinge President 940G from May 22 to September 3, 2021. Ultrasound safe to AI date at 35 days.



37B



JL Ruby 5003 - Dam of Lot 37 A and B, high selling female in AAC 2020 at \$20,000 to Maple Line Farms



Lot **38A** REHORST REGARD JUNE 33H

FEMALE // APPLIED FOR // RHFL 33H // 12/03/2020

S A V RESOURCE 1441 SITZ UPWARD 307R
S A V REGARD 4863 JL JUNE 1070
 S A V BLACKCAP MAY 5530 JL JUNE 06 40

PE: BW: 4.6 // WW: 74 // YW: 133 // MCE: 1.5 // MILK: 29
 AI bred to S A V Rainfall 6846 on April 1, 2021. Exposed to Rehorst Tinge President 940G from May 22 to September 3, 2021. Ultrasound safe to AI date at 35 days.

- Exceptional opportunity to acquire three maternal sisters from a cow that has put us on the map
- Maternal sisters sell as lots 10, 11, and 34
- All bred to the calving ease sensation Rainfall
- Outstanding Epd's, temperament and look
- Our ET program has been successful, hence we can offer so many maternal sisters to provide excellent consistency

Offered By: Rehorst Farms Ltd.



Rehorst Sensation June 916G - Maternal sister, sells as Lot 11!



Rehorst June 342A - Maternal Sister, sells as Lot 34!



38B

Get **38B** REHORST REGARD JUNE 34H

FEMALE // APPLIED FOR // RHFL 34H // 12/03/2020

S A V RESOURCE 1441 SITZ UPWARD 307R
S A V REGARD 4863 JL JUNE 1070
 S A V BLACKCAP MAY 5530 JL JUNE 06 40
 PE: BW: 4.6 // WW: 74 // YW: 133 // MCE: 1.5 // MILK: 29
 AI bred to S A V Rainfall 6846 on April 1, 2021. Exposed to Rehorst Tinge President 940G from May 22 to September 3, 2021. Ultrasound safe to AI date at 35 days.

Offered By: Rehorst Farms Ltd.

Get **38C** REHORST SENSATION JUNE 6H

FEMALE // APPLIED FOR // RHFL 6H // 04/01/2020

S A V REGISTRY 2831 SITZ UPWARD 307R
S A V SENSATION 5615 JL JUNE 1070
 S A V BLACKCAP MAY 4136 JL JUNE 06 40
 PE: BW: 2.4 // WW: 62 // YW: 117 // MCE: 5.5 // MILK: 25
 AI bred to S A V Rainfall 6846 on April 1, 2021. Exposed to Rehorst Tinge President 940G from May 22 to September 3, 2021. Ultrasound safe to AI date at 35 days.

Offered By: Rehorst Farms Ltd.



38C



39

Lot **39** REHORST EVENING TINGE 21H

FEMALE // APPLIED FOR // RHFL 21H // 26/01/2020

S A V RESOURCE 1441
S A V REGARD 4863
S A V BLACKCAP MAY 5530

S A V ELIMINATOR 9105
X JL EVENING TINGE 3618
HF EVENING TINGE 57R

PE: BW: 3.8 // WW: 59 // YW: 101 // MCE: -2.0 // MILK: 29

AI bred to S A V Rainfall 6846 on April 1, 2021. Exposed to Rehorst Tinge President 940G from May 22 to September 3, 2021. Ultrasound safe to AI date at 40 days.

- Admire the 3618 daughter that is at the top of the pen
- We've been pleased with the Regard progeny for their added muscle shape
- The Tinges never miss and bred to Rainfall

Offered By: Rehorst Farms Ltd.

Lot **40** REHORST EVENING TINGE 030H

FEMALE // 2160376 // RHFL 030H // 08/03/2020

COLEMAN CHARLO 0256
S A V PRESIDENT 6847
S A V BLACKCAP MAY 5530

S A V ELIMINATOR 9105
X JL EVENING TINGE 2280
HF EVENING TINGE 57R

BW: 2.5 // WW: 60 // YW: 99 // MCE: 2.0 // MILK: 27

AI bred to Musgrave 316 Stunner on April 1, 2021. Exposed to Rehorst Tinge President 940G from May 22 to September 3, 2021. Ultrasound safe to AI date at 35 days.

- President has been so good to us, her mother sells as Lot 28
- This female has more than 30 maternal sisters or brothers from the 2280 female

Offered By: Rehorst Farms Ltd.



40



JL Evening Tinge 3618 - Dam of Lot 39



Cat **41** REHORST EVENING TINGE 952G

FEMALE // 2100565 // RHFL 952G // 20/05/2019

RITO 707 OF IDEAL 3407 7075 S A V ELIMINATOR 9105
S A V RENOWN 3439 X **LEELA EVENING TINGE 19A**
 S A V BLACKCAP MAY 5530 HF EVENING TINGE 57R

BW: 2.0 // WW: 57 // YW: 101 // MCE: 2.0 // MILK: 23

AI bred to S A V Bloodline 9578 on April 1, 2021. Exposed to Rehorst Tinge President 940G from May 22 to September 3, 2021. Ultrasound safe to AI date at 35 days.

- Extra age heifer that has been held over for early calving to the exciting Bloodline
 - Renown insures a brood cow in the making
- Offered By: Rehorst Farms Ltd.**

Cat **42** REHORST EVENING TINGE 1H

FEMALE // 2208198 // RHFL 1H // 02/01/2020

COLEMAN CHARLO 0256 S A V FINAL ANSWER 0035
S A V RAINFALL 6846 X **REHORST EVENING TINGE 841F**
 S A V BLACKCAP MAY 4136 REHORST EVENING TINGE 690D

BW: 1.0 // WW: 62 // YW: 113 // MCE: 6.0 // MILK: 29

AI bred to Musgrave 316 Stunner on May 21, 2021. Exposed to Rehorst Tinge President 940G from May 22 to September 3, 2021.

- Genetically this female has as much potential as any in our offering
 - Rainfall is the sire of the future, especially on the female side, incredibly made and sound
 - Low BW to top 9% YW this female can be bred any way for success
 - Her Maternal brother sells as Lot 21A
- Offered By: Rehorst Farms Ltd.**





43

Get **43 LLB PRINCESS AYAH 576H**

FEMALE // 2182084 // LLB 576H // 09/03/2020

C J PRESTIGE 25T
LLB SMART ONE 209C
 LLB PRINCESS MIA 294L



C J PRESTIGE 25T
LLB PRINCESS AYAH 59Y
 LLB PRINCESS MIA 294L

BW: 2.9 // WW: 44 // YW: 81 // MCE: 8.0 // MILK: 21

AI bred to S A V Rainfall 6846 on April 1, 2021. Exposed to Rehorst Tinge President 940G from May 22 to September 3, 2021. Ultrasound safe to AI date at 35 days.

- An LLB heifer that has certainly grown on us around here at the farm
 - Early service to Rainfall for ideal progeny this coming year
- Offered By: Rehorst Farms Ltd.

Get **44 LLB MCHENRY BLACKCAP 337H**

FEMALE // 2157053 // LLB 337H // 06/02/2020

LLB THUNDERBIRD 555B
3 "G" THUNDERBIRD 14D
 3 "G" ERICA 1A



REMITALL F ODYSSEY 67X
REMITALL F BLACKCAP 184A
 REMITALL BLACKCAP 448T

BW: 2.7 // WW: 55 // YW: 105 // MCE: 4.0 // MILK: 19

AI bred to S A V Rainfall 6846 on April 1, 2021. Exposed to Rehorst Tinge President 940G from May 22 to September 3, 2021. Ultrasound safe to AI date at 35 days.

- Thunderbirds have really work well for us with daughters now living at Larch Grove Farm in Newfoundland
 - Rainfall progeny will never be out of style
- Offered By: Rehorst Farms Ltd.



44



Lot **45 LLB ARGENTINA ERICA 75H**

FEMALE // 2157130 // LLB 75H // 19/02/2020

S A V SENSATION 5615
GREENWOOD FOXHOLE JJP 54F X SITZ UPWARD 307R
 MICH ENVOIOUS BLACKBIRD 1424 LLB ARGENTINA ERICA 862Z
 WAF MS ARGENTINA 363U

BW: 4.0 // WW: 39 // YW: 76 // MCE: 6.0 // MILK: 24

AI bred to S A V Rainfall 6846 on May 21, 2021. Exposed to Rehorst Tinge President 940G from May 22 to September 3, 2021.

- Foxhole progeny were amongst the top sellers this last spring at Canada's largest Angus outfit... LLB
- Upward on the bottom side insures maternal greatness to this female

Offered By: Rehorst Farms Ltd.

Lot **46 REHORST PRESIDENT LASS 7H**

FEMALE // 2208199 // RHFL 7H // 04/01/2020

COLEMAN CHARLO 0256
S A V PRESIDENT 6847 X REMITALL F REACTOR 40A
 S A V BLACKCAP MAY 5530 LLB BLUE LASS 637C
 J P D BLUE LASS 21N

BW: 3.7 // WW: 66 // YW: 106 // MCE: 0.0 // MILK: 19

AI bred to S A V Bloodline 9578 on February 18, 2021. Exposed to Rehorst Tinge President 940G from May 22 to September 3, 2021. Ultrasound safe to AI date at 40 days.

- This President daughter is backed by as good looking of a cow as you'll witness, she also sells as Lot 16
- Early Bloodline service is exciting and fresh
- The type of female that will grow into herself that pays the bills

Offered By: Rehorst Farms Ltd.





Cat **47** KEMP BROTHERS JESSIE 7H

FEMALE // 2193359 // KBF 7H // 05/01/2020

S A V RENOWN 3439 KEMP BROTHERS ATLAS 23A
S A V RENOVATION 6822 X **KEMP BROTHERS JESSIE 78D**
 S A V MADAME PRIDE 0151 KEMP BROTHERS JESSIE 17A

PE: BW: 1.7 // WW: 54 // YW: 96 // MCE: 6.0 // MILK: 23
 AI bred to S A V Rainfall 6846 on March 21, 2021. Ultrasound preg checked safe to that breeding

These Renovations all pattern themselves the same – deep, sound, pretty fronted and moderate framed. 7H is no different. And if I had a dollar to bet I'd put it on her showing up at the calving barn this winter with a near perfect udder.

Offered By: Kemp Brothers



S A V Rainfall 6846 - Service Sire of Lot 47



S A V Renovation 6822 - Sire of Lot 47



48

Cat **48** KEMP BROTHERS MAYFLOWER 16H

FEMALE // 2186501 // KBF 16H // 11/01/2020

BARSTOW CASH
KR CASH FLOW
WK LASS 1591



MOHNEN SOUTH DAKOTA 402
KEMP BROTHERS MAYFLOWER 30D
KEMP BRO'S MS MAYFLOWER 63Y

PE: BW: 4.2 // WW: 60 // YW: 103 // MCE: 1.0 // MILK: 20

AI bred to S A V Rainfall 6846 on March 21, 2021. Ultrasound preg checked safe to that breeding

A real eye appealing heifer out of a powerful South Dakota dam. 16H is made how we like em – sound, deep, easy doin'.

Offered By: Kemp Brothers

Cat **49** KEMP BROTHERS MAYFLOWER 10H

FEMALE // 2186494 // KBF 10H // 09/01/2020

BARSTOW CASH
KR CASH FLOW
WK LASS 1591



EF REVOLUTION 23Y
KEMP BROTHERS MAYFLOWER 89C
KEMP BRO'S MS MAYFLOWER 63Y

PE: BW: 3.2 // WW: 57 // YW: 98 // MCE: 4.5 // MILK: 19

AI bred to S A V Rainfall 6846 on March 21, 2021. Ultrasound preg checked safe to that breeding

Just an absolute tank of a heifer, Luke's 4H calf from last year – she's broke, docile and ready to go make a cow! Many of the folks who were through our heifers this past winter had 10H as the pick of the pen – she might be yours too – have a look, she won't disappoint!

Offered By: Kemp Brothers



49



50

Get **50 KEMP BROTHERS BAILEY ZARA 53H**

FEMALE // 2186559 // KBF 53H // 01/02/2020

S A V FINAL ANSWER 0035
CONNEALY CAPITALIST 028
 PRIDES PITA OF CONANGA 8821

BAILEY ACRES TWISTER 13U
BAILEY ACRES ZARA 6X
 STALBURN ZARA 7L

BW: - // WW: - // YW: - // MCE: - // MILK: -

AI bred to Musgrave Colossal on April 9, 2021. Ultrasound preg checked safe to that breeding

53H is a real nice Connealy Capitalist daughter out of a Bailey Acres cow – Ross would like her if he was still around and you will too. Her 11 year old dam moves like a cat and will calve again at our place this winter.

Offered By: Kemp Brothers

Get **51 KEMP BROTHERS LADY 34H**

FEMALE // 2186521 // KBF 34H // 18/01/2020

KR CASH FLOW
KEMP BROTHERS DISCOUNT 7D
 KEMP BROTHERS MAYFLOWER 13A

S A V FINAL ANSWER 0035
JL LADY 6125
 JL LADY 1200

PE: BW: 0.4 // WW: 57 // YW: 99 // MCE: 7.5 // MILK: 24

AI bred to S A V Rainfall 6846 on April 29, 2021. Ultrasound preg checked safe to that breeding

This heifer grabs your attention as soon as you walk into the pen. She's pretty on her profile but is a wide hinged power heifer at the same time. Out of the Kemp Brothers Discount bull that sold at the 2017 Royal Elite Sale she combines genetics from one of our best cow families with a moderate framed, near perfect uddered Final Answer cow.

Offered By: Kemp Brothers



51



© Buschbeck

52

Lot **52** LYNDEN MANOR BEAUTY 30H

FEMALE // 2168962 // PHZ 30H // 18/02/2020

SYDGEN EXCEED 3223
SYDGEN ENHANCE X CONNEALY CONSENSUS 7229
 SYDGEN RITA 2618 EXAR MISS BEAUTY 2956
 EXAR MISS BEAUTY 2137

PE: BW: 0.7 // WW: 58 // YW: 111 // MCE: 10.0 // MILK: 29

AI bred to Mohnen General 548 on May 29, 2021.

Beauty 30H is a direct daughter of the foundation Lynden Manor donor, Miss Beauty 2956 sired by the proven and popular leader of the Sydenstricker Genetics, Mogck Angus and ORigen rosters, Enhance. The dam of Beauty 30H joined the Lynden Manor program as a highlight of a past Express Ranches Big Event sale and blends the legendary Express female sire, Consensus with the foundation daughter of the proven Marbling sire, Prime Star in the Stratford Seedstock program, Miss Beauty 2137. The dam of Beauty 30H has had 19 progeny sell for an average of nearly \$6,000. Maternal siblings to Beauty 30H include: the \$50,000 half interest and lead-off bull of the EXAR Pen of Three at the National Western Stock Show and former Express Ranches and Brody Farms herd sire, Expo 7760B; Miss Beauty 7708, the featured female in the Gilliland Livestock program; and Miss Beauty 7702, the \$20,000 third high-selling open heifer in the TK Cattle Company program who produced Miss Beauty 9503, the \$20,000 third high-selling open heifer of the 2020 TK Live Online Sale selected by Spruce Mountain Ranch and Express Ranches.

Offered By: Lynden Manor Farms

Lot **53** BURRILL EMPRESS 2H

FEMALE // 2139333 // BURL 2H // 04/02/2020

CONNEALY BLACK GRANITE
MARDA BLACKSMITH 683 X FIRST LINE ARROW 1C
 S A V BLACKCAP MAY 3092 BURRILL EMPRESS 3F
 FIRST LINE EMPRESS 5Y

BW: - // WW: - // YW: - // MCE: - // MILK: -

AI bred to Mohnen General 548 on April 23, 2021.

Empress 2H is a powerful bred heifer with loads of volume, long feminine front and big square hip and offers an outstanding package from the heart of the Lynden Manor replacement females. Empress 2H is a daughter of the \$24,000 top-selling bull of the 2017 National Western Bull Sale selected by Split Diamond Ranch, Southard Land and Cattle and Malek Angus. Blacksmith 683 stems from one of the top producing families ever utilized in the Burrill Family Farms program, Empress.

Offered By: Lynden Manor Farms



© Buschbeck

53



Sydgen Enhance - Sire of Lot 52



Mohnen General 548 - Service Sire of Lots 52 & 53



Cat 54

DDGN BEAUTY 6H

FEMALE // 2214738 // DDGN 6H // 10/01/2020

COLEMAN CHARLO 0256
S A V RAINDANCE 6848
 S A V BLACKCAP MAY 4136

EXAR BLUE CHIP 1877B
X **PREMIER BC BEAUTY 802**
 GIBSON 7024 BEAUTY 115B

PE: BW: 3.3 // WW: 65 // YW: 116 // MCE: 6.0 // MILK: 20
 AI bred to OHL Gunner on May 6, 2021. Due to calve February 12, 2022, preg checked safe to that date on June 7, 2021

- A daughter of Beauty 802, 2018 Royal Winter Fair Reserve Champion Female
 - Beauty 6H is a very fancy fronted female that is deep sided, high volume and performance oriented
 - Her stage presence catches everyone's attention that has toured our pastures
 - Beauty 6H is tie broke and quiet to work with
 - Bred for February 12, 2022 to our bull OHL Gunner
- Offered By: Dudgeon Cattle Co. and Otter Creek Farms**



Premier BC Beauty 802 - \$32,000 high seller in Falls View 2018. Dam of Lot 54.



OHL Gunner 7263G - Service Sire



55



Gillco Velvet 1Z - Dam of Lot 55



Conley Prowess - Service Sire of Lot 55

Lot 55 DDGN VELVET 10H

FEMALE // 2191491 // DDGN 10H // 27/01/2020

EXAR CLASSEN 1422B S A V NET WORTH 4200
MICH WHEATLAND HICALIBER 7197E X **GILLCO VELVET 1Z**
 EXAR HIGHROSE 84026 MILLENNIUM VELVET

PE: BW: 4.4 // WW: 57 // YW: 97 // MCE: 7.0 // MILK: 24
 AI bred to sexed female Conley Prowess on April 10, 2021. Due to calve January 17, 2022, preg checked safe to that date on June 7, 2021.

- An ET daughter from our successful donor cow Gillco Velvet 1Z
 - Sired by our Royal Winter Fair Supreme Champion Bull, Hi-Caliber
 - Velvet 10H is a very quiet female who was a breeze to halter break
 - She has lots of maternal traits and will be easy keeping, easy doing like her mother.
 - Flush siblings have been marketed in Manitoba and Alberta
 - Velvet 10H is bred to sexed Prowess, for a heifer calf on January 17, 2022. He is a popular Express son that ST Genetics markets.
- Offered By: Dudgeon Cattle Co.**

Lot 56 DDGN HEROINE 8H

FEMALE // 2176103 // DDGN 8H // 15/01/2020

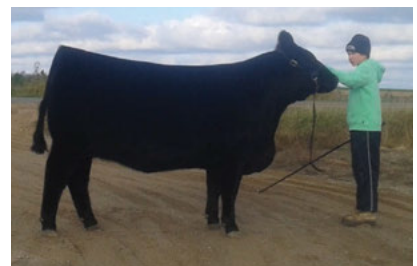
EXAR CLASSEN 1422B YOUNG DALE XCALIBER 32X
MICH WHEATLAND HICALIBER 7197E X **YOUNG DALE HEROINE 95C**
 EXAR HIGHROSE 84026 YOUNG DALE HEROINE 93X

PE: BW: 4.1 // WW: 61 // YW: 102 // MCE: 6.5 // MILK: 22
 Bred to to SBF Wealth 0026 on May 19, 2021. Due to calve February 25, 2022, preg checked safe to that date on July 5, 2021.

- This is a daughter of one of our foundation females
 - Heroine 8H has loads of power. She is a big bodied, broody female with lots of natural thickness, while still maintaining eye appeal
 - Heroine 8H is halter broke. A quiet female to work around
 - Bred for February 25, 2022 to SBF Wealth, our SAV resource son with a 1.7 BW and 122 YW
- Offered By: Dudgeon Cattle Co.**



56



Young Dale Heroine 95C - Dam of Lot 56



Mich Wheatland Hicaliber 7197E - Sire of Lot 55 and 56



Cat **57** **MAPLE LINE ANNE 4H**

FEMALE // 2143420 // IRA 4H // 07/01/2020

S A V 8180 TRAVELER 004
S A V 004 DENSITY 4336
 S A V MAY 7238

S A V CAMARO 9272
JAMESVIEW ANNE 7D
 JAMESVIEW ANNE 13B

BW: 3.6 // WW: 56 // YW: 96 // MCE: 4.0 // MILK: 22
AI bred to MICH Wheatland Hicaliber 7197E on March 29, 2021. Preg checked safe to this date

Maple Line Anne 4H is a powerful, stand out heifer that is noticed by all who come on the property. This big ribbed heifer has lots of growth and is deep and thick as they come. 4H is very correct in phenotype with the EPD's to match. This easy doing heifer stays in show ready condition year round. This is the type of female that you could put into your flush program or add her straight to the show string. This heifer is really docile and just a pet in the pasture. Here is your chance to get a direct daughter out of the very well known SAV 004 Density bull and that breeding is hard to get your hands on. Her dam is out of the great SAV Camaro bull and she produces great females like this year after year. This great Camaro dam is on track to join our flush program to create more daughters that look just like this one. This Density heifer is bred to the well known Hicaliber bull and this pedigree match up is screaming with potential. The Hicaliber calves are showy calves that are growing strong and developing into very nice animals. Be sure to look for this sale feature on sale day and fall in love with her for yourself.

Offered By: Maple Line Farm



S A V Denisty 4336 - Sire



Mich Wheatland Hicaliber 7197E - Service Sire



58

Get **58** **MAPLE LINE ERICA 1H**

FEMALE // 2143724 // IRA 1H // 01/01/2020

S A V RENOWN 3439
JL RENOWN 7110
 JL DELIA 4389



MAPLE LINE NETWORK 12C
MAPLE LINE ERICA 12F
 LLB ERICA 135C

BW: 2.0 // WW: 59 // YW: 110 // MCE: 6.0 // MILK: 27

AI bred to MICH Wheatland Hicaliber 7197E on March 29, 2021. Preg checked safe to this date.

Maple Line Erica 1H is an extremely attractive female that is strong boned with lots of power. 1H is a sound moving heifer that is long sided with smooth shoulders and lots of hip. This fancy female is very correct in phenotype with lots of potential and a great set of EPD's to back her up. With a low BW of 2.0 and a YW of 110 with a Milk of 27 this heifer is sure to make calving easy with progeny that grow like crazy. The dam of this female goes back to the great Network bull and he makes great cows. The sire of this heifer is Renown 7110 and he is arguably one of the best Renown sons ever. Bred to the Hicaliber bull and matched with the Renown bloodline this is sure to produce the front pasture kind. With this pedigree and set of numbers, her calf should be something to talk about. Make sure to see what she's all about on sale day.

Offered By: Maple Line Farm

Get **59** **MAPLE LINE BESSY 2H**

FEMALE // 2143722 // IRA 2H // 05/01/2020

S A V RENOWN 3439
JL RENOWN 7110
 JL DELIA 4389



MAPLE LINE NETWORK 12C
MAPLE LINE BESSY 6F
 MAPLE LINE BESSY 6C

BW: 2.2 // WW: 49 // YW: 96 // MCE: 4.0 // MILK: 26

AI bred to Whitestone 18-Million on March 29, 2021. Pasture exposed to GF Powerstroke 550F from April 15 to May 27, 2021. Preg checked safe for an early February calf.

Maple Line Bessy 2H is a sharp looking female from the well known Renown son, Renown 7110. This stout heifer is full of rib with a large hip and feminine front end. If you're looking for a heifer to go out and make a name for herself in the pasture this is the one for you. This female is very docile and easy to work with. The Bessy cow family has a strong presence in our herd and this female is a prime example. This heifer's EPD's speak for themselves with a caving ease BW of 2.2 and a large YW of 96 for calves that grow with a milk EPD of 26 to feed them. This heifer is bred to our GF Powerstroke bull which is proving himself and becoming one of our best herd sires. The Powerstroke bull makes some great young herd sires and terrific replacement females. The Powerstroke calves have some of the highest weight per day of age gain in our herd. Be sure to take a look at this heifer on sale day.

Offered By: Maple Line Farm



59



60 **NORFOLK ELINE ERICA 10H**

FEMALE // 2130361 // NOR 10H // 15/01/2020

BROOKING BANK NOTE 4040 S A V RADIANCE 0801
BROOKING PRINCIPAL 6039 X **LOCUST GROVE ELINE ERICA 1D**
 SOO LINE MAUREEN EMILIE 0144 LOCUST GROVE ELINE ERICA 16B

BW: 0.4 // WW: 55 // YW: 99 // MCE: 15.0 // MILK: 30
 AI bred to S A V Bismarck 5682 (sexed female) on March 25, 2021.

This beautiful bred heifer has great eye appeal and is quite powerful, like her dam. We actually purchased her dam in this sale back in 2016 and she has done a fantastic job ever since. She has a no miss production record and is one of those cows that you can always count on for a positive outcome. We expect nothing less with this bred heifer, especially since her sire is also so reliable. He was purchased from Brooking Angus Ranch in 2017 as a yearling and has covered a lot of commercial and purebred cows. He's never had a foot trim, never had any injuries, and he has proven himself to be a great calving ease sire that stamps his calves with nice black hair coats and extra muscle.

Offered By: Norfolk Cattle

61 **NORFOLK LADY 35G**

FEMALE // 2128055 // NOR 35G // 05/12/2019

CTS REMEDY 1T01 HF PROWLER 43U
ELLINGSON HOMEGROWN 6035 X **WERNER LADY 3003**
 EA BLANCHE 4137 TOP LINE LADY 102

BW: 1.6 // WW: 53 // YW: 93 // MCE: 14.0 // MILK: 31
 AI bred to Norfolk Cast Iron 36E on March 3, 2021.

We have very high hopes for this beautiful female. She's bred up very early to a bull that we raised ourselves - NOR 36E - that consistently sires growthy calves with tremendous capacity. Her dam is stunning, especially for her age. She's muscular, yet still feminine looking with a beautiful head and a picture perfect udder. On the paternal side, her sire Ellingson Homegrown 6035 has proven to be a great maternal sire with exceptional feet, hair, growth and carcass traits. We used him heavily this breeding season, as we were so impressed with his previous progeny here.

Offered By: Norfolk Cattle



Werner Lady 3003 - Dam of Lot 61



Ellingson Homegrown 6035 - Sire of Lot 61

61



62

62 HARPNEY BIRDIE 29H

FEMALE // 2142292 // PSH 29H // 22/01/2020

R B ACTIVE DUTY 0010X YOUNG DALE BELIEVE 46B
 NORTH CAMP SILVER STAR 5103 \times HARPNEY BIRDIE 21F
 MALSONS JILT 13Z HARPNEY BIRDIE 38Y

BW: 4.2 // WW: 63 // YW: 110 // MCE: 6.0 // MILK: 21
 AI bred to SAV Checkmate 8158 on March 22, 2021 Pasture exposed
 to Harpney Hendrix 11H from May 15 to July 1, 2021.

These Silverstar sisters we are sure will find a lot of friends. The sire group consistently created females with high loads of growth, shape, and overall mass that's desired by most cattleman. This female is super well put together and being the first calf on one of our favourite up and comers we know shes got the cow families behind her. Her service to SAV Checkmate will be one to look forward to and the type of mating to be progressive.
Offered By: Harpney Farms

63 HARPNEY KIM 26H

FEMALE // 2142016 // PSH 26H // 20/01/2020

R B ACTIVE DUTY 0010X DAMERON C-5 AMERICAN CLASSIC
 NORTH CAMP SILVER STAR 5103 \times HAMMELL 10B KIM 5E
 MALSONS JILT 13Z HAMMELL 879S KIM 10B

BW: 3.4 // WW: 64 // YW: 111 // MCE: 8.0 // MILK: 22
 AI bred to SAV Checkmate 8158 on March 22, 2021 Pasture exposed
 to Harpney Hendrix 11H from May 15 to July 1, 2021.

This is a bigtime cow prospect. This Silverstar female puts a lot of things together for us in what we strive for an Angus female to be. She's super sound made from the ground up exemplifying plenty of natural hip and muscle shape, extraordinary through her middle third in terms of mass and rib shape, maintaining that nice Angus cow look through her front end she sure has an exciting future ahead. The walking herd sire exposure Harpney Hendrix 11H is out of the Youngdale Jullian 64E and out of a picture perfect Believe daughter. He is our ideal type of bull, strong footed huge hind quarter, sharp fronted he's a young sire that we are expecting a big future from.
Offered By: Harpney Farms



63



Get **64**

GILLCO ROSEBUD 1H

FEMALE // 2136403 // KKG 1H // 01/01/2020

DAMERON FIRST CLASS
PVF INAUGURATION 6174
 PVF MISSIE 790



MWC CHIEF 181W
BROCKHILL ROSEBUD 15Z
 MWC ROSEBUD 1X

BW: 3.0 // WW: 54 // YW: 92 // MCE: 8.0 // MILK: 22
 AI bred to GF Verdict 71D on May 16, 2021. Preg checked safe to this date.

Here's one Inauguration you won't want to miss !! PVF Inauguration make them sharp and no exception here! 1H has got the hip, top and depth with a profile to boot. She comes from a broody, great milking, hard working, productive mama. Rosebud's mating to GF Verdict 71D will make for a heck of a genetic package delivered to you February 22, 2022. She is quiet and haltered.
Offered By: Gillco Farms



PVF Inauguration 6174 - Sire of Lot 64



GF Verdict 71D - Service Sire of Lot 64



65

Cat 65

GILLCO ELBA 3H

FEMALE // 2136556 // KKG 3H // 07/01/2020

LD CAPITALIST 316
MUSGRAVE 316 STUNNER
 MCATL BLACKBIRD 831-1378

S A V RESOURCE 1441
X **CLEAR VIEW ELBA 16F**
 CLEAR VIEW ELBA 18B

BW: 1.9 // WW: 68 // YW: 117 // MCE: 3.0 // MILK: 23

AI bred to Stevenson Turning Point March 29, 2021. Preg checked safe to this date.

It's an honour for us at Gillco to be consigning to the Autumn Angus Classic Sale for our first time. Having said that, we thought we would share one of our top new cow lines with you, the Elba line. Gillco Elba 3H is a sharp, broody, deep bodied impeccable Stunner daughter. We purchased our first Elba, a Resource female, 3H's mother at the In it to Win it Sale. Elba 3H has a stand out pedigree with her 2nd maternal grandma back being a direct SAV female. Elba is bred Stevenson Turning Point for a January 5, 2022 calf. Quiet and haltered.

Offered By: Gillco Farms

Cat 66

MCGAFFIN FAVORITE 01H

FEMALE // 2165497 // MCG 01H // 15/01/2020

G A R GRID MAKER
S A V BISMARCK 5682
 S A V ABIGALE 0451

X COLBURN PRIMO 5153
WORTH-MOR FAVORITE 808F
 WMC FAVORITE 25U

BW: 1.8 // WW: 51 // YW: 83 // MCE: 8.5 // MILK: 20

AI bred to EXAR Guru 8719B on March 30, 2021. Preg checked safe.

We are pleased to be a part of the Autumn Angus Classic and are excited to offer Favorite 01H. A daughter of the legendary S A V Bismarck, she is a well rounded individual that will fit in nicely to anyone's program. Bred to the 2019 Express Ranches high selling bull EXAR Guru for an early January calf is an opportunity you don't want to miss out on!

Offered By: Calum McGaffin



66

© Buschbeck



Oct **67** **FIVE R PRIDE 36G**

FEMALE // 2122914 // FRF 36G // 23/10/2019

JMB TRACTION 292
SCHIEFELBEIN ATTRACTIVE 4565
 FROSTY ANSWER 3979

CRESCENT BLYTHE ABERDEEN 2Y
FIVE R PRIDE 59D
 FIVE R PRIDE 2Z

BW: 2.0 // WW: 55 // YW: 55 // MCE: 6.0 // MILK: 26

AI bred to Musgrave Colossal on April 7, 2021. Preg checked safe by ultrasound on June 15. Due January 14, 2022.

Five R Pride is a can't miss Schiefelein Attractive daughter, out of our Pride family that originated at Glen Islay. With her October 2019 D.O.B., she has the added maturity to be an outstanding addition to your herd. Vaccinated with Express FP10

Offered By: Five R Farms

Oct **68** **FIVE R QUEEN 31H**

FEMALE // 2142835 // FRF 31H // 02/01/2020

V A R DISCOVERY 2240
QUAKER HILL COLUMBUS 6V48
 QUAKER HILL BLACKCAP 3N23

FIRST LINE FINAL PRODUCT 8A
FIRST LINE QUEEN 40C
 FIRST LINE QUEEN 20A

BW: 1.3 // WW: 68 // YW: 111 // MCE: 12.0 // MILK: 29

AI bred to to Musgrave Colossal on April 1, 2021. Preg checked safe by ultrasound on June 15. Due January 8, 2022.

Five R Queen 31H is our top pick of our bred heifers this year, and it's tough to let her go. With impressive EPD numbers from her sire Quaker Hill Columbus, 31H will definitely produce for years to come. Be sure to check her out on sale day. Vaccinated with Express FP10.

Offered By: Five R Farms





69

VLS BLACKBIRD 327H

FEMALE // 2152156 // VLS 327H // 26/01/2020

PLAINVIEW LUTTON E102
S&R ROUNDTABLE J328
PVF PROVEN QUEEN 786



PEAK DOT RESOLUTE 37W
RIVER POINT BLACKBIRD 326Z
LOCUST GROVE BLACKBIRD 30X

BW: 3.8 // WW: 53 // YW: 83 // MCE: 7.5 // MILK: 21

AI bred to S A V Rainfall 6846 on April 21, 2021. Pasture exposed to PFLC Primo 3953G from June 1 to July 15, 2021. Preg checked favourable to AI breeding.

Blackbird comes from one of our oldest cows that goes back to the Locust Grove herd. Her sire is the outcross S & R Roundtable J328. She is smooth made, sound and stout. Her quiet demeanor makes her a favourite with our junior program.

Offered By: Van Esse Livestock

70

VLS BEAUTY 97H

FEMALE // 2152167 // VLS 97H // 08/03/2020

C&C TUITION 3025 EXAR
FMS TUITION 1D
SAV FLORENCE EXT 878 1T



HF FULL FOCUS 127Y
LLB BEAUTY 94A
LLB BEAUTY 782W

BW: 7.0 // WW: 56 // YW: 98 // MCE: 2.0 // MILK: 20

AI bred to S A V Rainfall 6846 on April 21, 2021. Preg checked safe to AI.

Beauty 97H goes back to LLB Beauty 94A, who we acquired in the Locust Grove dispersal. She is a long sided, deep bodied female that travels out on a great set of feet and legs.

Offered By: Van Esse Livestock



70



Get **71** JPD MISS MARION 24H

FEMALE // 2135028 // JPDH 24H // 22/01/2020

WILL ROLE MODEL S A V PIONEER 7301
 JPD ROCKET MAN 9B ALLENCROFT MISS MARION 05 13Y
 JPD MIDDLEBROOK LASSTIW X J P D MISS MARION 13R

BW: 2.7 // WW: 45 // YW: 81 // MCE: 9.0 // MILK: 23

AI bred to Musgrave 316 Colossal 137 on March 27, 2021. Pasture exposed to JPD Conquer 35H from April 15 to August 1, 2021. Preg checked safe to AI mating on June 29, 2021.

Here is a Pioneer influenced Marion female and boy is she remarkable. This girl has consistently impressed us with her performance indexing 102 and 104 for weaning and yearling weight, respectively. She is extremely sound in her design and thick through. We are confident she will go on to make a front pasture kind of cow. To top it all off, she is safe to her early AI mating to Colossal! JPDH 24H comes halter broke to tie.

Offered By: JPD Farms

Get **72** JPD BLACKCAP 25H

FEMALE // 2135029 // JPDH 25H // 22/01/2020

SYDGEN C C & 7 S A V NET WORTH 4200
 HOOVER DAM TREV BLACKCAP LEA 3X
 ERICA OF ELLSTON C124 X J P D BLACKCAP 3S

BW: 1.1 // WW: 42 // YW: 73 // MCE: 3.0 // MILK: 27

AI bred to Musgrave 316 Colossal 137 on March 27, 2021. Pasture exposed to JPD Conquer 35H from April 15 to August 1, 2021. Preg checked safe to AI mating on June 29, 2021.

We sure like this Hoover Dam X Net Worth line. JPDH 25H's dam, TRV 3X, is a powerful Net Worth daughter who has left her mark on our program. Lea 3X never missed a January calving after her purchase as a heifer calf in the 2010 OAA Futurity Sale. She has been a consistent bull maker for us, having produced few females over the course of her life. Having finally retained a Lea female ourselves, we figured we should offer one to the industry. Like her mother, JPDH 25H is less refined in her phenotype, but believe us when we say she will turn out performance driven calves. Her maternal brothers have been making our commercial bull buyers money for years. She is safe to her AI mating and comes to the sale halter broke to tie.

Offered By: JPD Farms





Cat 73

JPD BLACKCAP 44H

FEMALE // 2135048 // JPDH 44H // 29/02/2020

J P D CHIZAM 7Z
JPD CONQUER 29C
 ALLENCROFT BLACKCAP 02 6W X POSS TOTAL IMPACT 745
 ALLENCROFT BLACKCAP 03 33C
 ALLENCROFT BLACKCAP 04 6Y
 BW: 4.5 // WW: 42 // YW: 74 // MCE: 2.0 // MILK: 21

AI bred to Musgrave 316 Colossal 137 on March 27, 2021. Pasture exposed to JPD Conquer 35H from April 15 to August 1, 2021. Preg checked favourable to an early May mating to JPD Conquer 35H on June 29, 2021.

Cow power alert! Her picture really does say it all. JPDH 44H screams brood cow. Her overall base, length and depth coupled with her feminine front end makes her the ideal sort of young female to base a cow family around. The Blackcap girls make up a good portion of the JPD herd, and there is a really good reason for that. They are easy on the eyes, ultra-productive and maternal to the max. JPDH 44H comes to the sale halter broke to tie and has a naturally calm, quiet demeanor. We really can't say enough. We love her folks!

Offered By: JPD Farms

Cat 74

JPD BLACKCAP 30H

FEMALE // 2135033 // JPDH 30H // 28/01/2020

WILL ROLE MODEL
JPD ROCKET MAN 9B
 J P D MIDDLEBROOK LASS TIW X SHIPWHEEL CHINOOK
JPD BLACKCAP 13A
 ALLENCROFT BLACKCAP 02 6W
 BW: 0.2 // WW: 37 // YW: 69 // MCE: 12.0 // MILK: 21

AI bred to Musgrave 316 Colossal 137 on March 27, 2021. Pasture exposed to JPD Conquer 35H from April 15 to August 1, 2021. Preg checked safe to AI mating on June 29, 2021.

A half sister to JPDH 24H, and very similar in her type and kind. We love the performance in these JPDH 9B daughters. They are thick through with tons of muscle expression. Her dam, JPDH 13A, is a moderate framed, fleshy, perfect uddered Chinook daughter who is no slouch when it comes to her productivity. JPDH 30H will no doubt become the kind of cow you like to keep around. She too is safe to her early Colossal mating and comes halter broke to tie.

Offered By: JPD Farms





Cat **75** **LEELA BARBARA 12H**

FEMALE // 2142726 // LELA 12H // 06/02/2020

KOUPALS B&B IDENTITY
MUSGRAVE AVIATOR
MCATL FOREVER LADY 1429-138

HF KODIAK 5R
EF BARBARA 8Y
BC BARBARA ROCKET 8158 PCC

BW: 1.0 // WW: 50 // YW: 91 // MCE: 11.0 // MILK: 21

AI bred to S A V Bloodline 9578 on April 2, 2021.

We truly believe in this royally bred female. Her bottom side is stacked with matrons of the breed and most notable on the sire side, Kodiak. Her Bloodline service should only enhance her value as a breeding piece.

Offered By: Leela Farms

Cat **76** **LEELA RUBY 10H**

FEMALE // 2142732 // LELA 10H // 30/01/2020

COLEMAN CHARLO 0256S
S A V REIGN 6845
S A V BLACKCAP MAY 4136

S CHISUM 0206
CRESCENT CREEK BLACKBIRD 72C
CRESCENT CREEK BLACKBIRD 153W

BW: 3.5 // WW: 59 // YW: 105 // MCE: 6.0 // MILK: 23

AI bred to S A V America 8018 on April 4, 2021.

Excellent made heifer that traces back to a solid female from Crescent Creek that has been a mainstay here at Leela. Reign of course being a full brother to President, Rainfall and others insures thickness in this female. Check that service to the hard to obtain S A V America!

Offered By: Leela Farms



S A V America 8018 - Service Sire of Lot 76



S A V Bloodline 9578 - Service Sire of Lot 75



77

Lot 77

CJR TIBBIE 5H

FEMALE // 2134230 // CJRO 5H // 07/01/2020

S A V RENOWN 3439
S A V RENOVATION 6822
S A V MADAME PRIDE 0151



VAN ESSE CAMARO 321B
CJRO TIBBIE 5E
CJRO TIBBIE 14C

BW: 3.0 // WW: 58 // YW: 101 // MCE: 4.0 // MILK: 20
AI bred to Conley South Point 8362 on March 24, 2021. Preg checked safe.

Here is a Renovation daughter that has been a standout since day one. Long bodied and feminine in her make. She is backed by the Tibbie cow family, which is the backbone of our herd. You can never have enough Tibbies. Bred to Conley South Point, have a look at her come sale day.

Offered By: CJR Cattle Company





Cat **78** REHORST TINGE EXT 807F

MALE // 2126168 // RHFL 807F // 02/01/2018

EMULATION N BAR 5522
N BAR EMULATION EXT
 N BAR PRIMROSE 2424



HF FREE WHEELER 191N
HF EVENING TINGE 57R
 HF EVENING TINGE 68H

BW: 0.4 // WW: 38 // YW: 72 // MCE: 10.0 // MILK: 23

- A bull that has been admired by many who have come to the farm
- A direct 57R son, 57R has over 65 direct progeny who have become household names throughout the industry
- Interesting EXT sire, this bull calves easy and we have many registered off of him

Offered By: Rehorst Farms Ltd.



HF Evening Tinge 57R - Dam of Lot 78



79

Lot 79

PREGNANT RECIPI

S A V AMERICA 8018 X JL FOREVER LADY 9078

S A V PRESIDENT 6847 SAVRENOVN 3439
 S A V AMERICA 8018 X JL FOREVER LADY 9078
 S A V MADAME PRIDE 0075 JL FOREVER LADY 1280

PE: BW: 2.1 // WW: 68 // YW: 120 // MCE: 4.0 // MILK: 24
 Recip is due to calve on February 11, 2022.

What an exciting mating here. JL Forever Lady 9078 was the top selling female of the record setting Johnson Dispersal last fall and we can't wait to see what her future holds. She currently is raising a whopping bull calf by FA and we have had excellent luck with her flushing abilities. Dave Johnson has recommended this female as one of the best they've ever produced... her breeding to America is very promising. Add your own tattoo to this fantastic embryo calf! Recip is an extra aged commercial heifer, born in 2019.

Offered By: Cuddy Farms



JL Forever Lady 6104 - Full sister to dam of embryos, she sells as Lot 25!

Lot 80

FIVE (5) UNITS OF SEMEN

S A V AMERICA 8018

COLEMAN CHARLO 0256 S A F 598 BANDO 5175
 S A V PRESIDENT 6847 X S A V MADAME PRIDE 0075
 S A V BLACKCAP MAY 4136 S A V MADAME PRIDE 8264

BW: 4.3 // WW: 80 // YW: 133 // MCE: 1.0 // MILK: 19
 Offered By: Cuddy Farms



80



Lot **81**

PREGNANT RECIPI

S A V AMERICA 8018 X COLEMAN DIXIE ERICA 8273

S A V PRESIDENT 6847
S A V AMERICA 8018
S A V MADAME PRIDE 0075



LEACHMAN RIGHT TIME
COLEMAN DIXIE ERICA 8273
COLEMAN DIXIE ERICA 143

BW: - // WW: - // YW: - // MCE: - // MILK: -

Recip due to calve January 9, 2022.

Offered By: La Conquista Ranches



S A V America 8018 - Sire of Lot 81



S A V Resource 1441 - Sire of Lot 82

Lot **82** PREGNANT RECIPI - SEXED FEMALE

S A V RESOURCE 1441 X COLEMAN BEAUTY 8313

RITO 707 OF IDEAL 3407 7075
S A V RESOURCE 1441
S A V BLACKCAP MAY 4136



S A V PRESIDENT 6847
COLEMAN BEAUTY 8313
TLA BEAUTY 5R

BW: - // WW: - // YW: - // MCE: - // MILK: -
Sexed Female Embryo. Recip due to calve February 4, 2022

Offered By: La Conquista Ranches

Contact any of the

**T BAR C STAFF FOR ASSISTANCE
PRIOR TO THE SALE**

CHRIS POLEY 306-220-5006
BEN WRIGHT 519-374-3335
SHANE MICHELSON 403-363-9973





Get **83 PREGNANT RECIP (LELA 17G)**

MOHNEN GENERAL 548 X KR LADY MAY 4382

BALDRIDGE COLONEL C251
MOHNEN GENERAL 548
 S A V MADAME PRIDE 5290

K R GAVEL 1057
KR LADY MAY 4382
 WK LADY MAY 2347

PE: BW: 2.2 // WW: 69 // YW: 123 // MCE: 4.0 // MILK: 32
 Embryo was impanted on March 12, 2021

Lady May has become one of the top donors in the entire breed. She currently has over 25 registered progeny who topped sales in four different provinces. Mohnen General is highly sought after with semen being in unbelievable demand at this years past February Freeze sale. Remarkable EPD profile awaits this exclusive mating. Please note the female carrying this embryo is a purebred Angus female and of good quality (S A V Bullion grand daughter)

Offered By: Leela Farms

LEELA DAWN 17G

FEMALE // 2083225 // LELA 17G // 21/03/2019

S A V BULLION 0474
LEELA BULLION 2E
 LEELA BARB 17C

HF KODIAK 5R
LEELA DAWN 8C
 MFI DAWN 9181

BW: 1.4 // WW: 53 // YW: 91 // MCE: 7.0 // MILK: 21



Mohnen General 548 - Sire of Embryos. One of the most popular exclusive sires is this Madame Pride son, who is surpassing expectations as an influential herd sire at LLB Angus



High selling heifer calf to Leela Farms



High selling cow to Double L Angus



High selling cow to Maple Line Farm



High selling bred heifer to Midland Cattle Co.

TERMS:

The terms of the sale are cash or cheque, payable at par at the sale location. The right of property shall not pass until after settlement has been made; no invoicing on buyers in attendance unless previous arrangements have been made. Every animal sells to the highest bidder and in cases of disputes, the auctioneer's decision will be final. Announcements from the auction block will take precedence over the printed matter in the catalogue. Current exchange rates will be announced sale day. All monies are in Canadian funds.

CERTIFICATE OF REGISTRATION:

Each animal will carry papers issued by the Canadian Angus Association unless otherwise stated. A certificate of registry duly transferred will be furnished to the buyer for each animal after payment has been made.

Pedigree Estimates:

Pedigree Estimates (PE) are created on the projected mating of the animal's sire and dam based on averages of the two, creating estimated values that do not hold the same accuracy of actual EPDs issued from the association and should be used as such.

HEALTH:

All animals in the sale have met all necessary health requirements.

GUARANTEE:

Each animal becomes the purchaser's risk immediately after the animal is sold. All animals in this sale will be sold under the terms and guarantees set forth by the Canadian Angus Association with regard to health, freedom from defects and from both reproductive and specific genetic unsoundness.

PREGNANCY INFORMATION:

All serviceable age females have been pregnancy examined by an accredited veterinarian, giving an estimated length of gestation. This estimated gestation period shall be used only as a guideline to calving and is not a guarantee of actual service.

LIABILITIES:

All persons attend the sale at their own risk. The seller, facility owner and sale manager assume no liability legal or otherwise, for any accidents that occur. It is understood that T Bar C Cattle Co. (2013) Ltd. is acting only as a medium between buyer and seller and is not responsible for any failure on the part of either party to live up to his obligations. Neither does T Bar C Cattle Co. (2013) Ltd. assume any financial obligations to collect or enforce collection of any monies between parties and any legal action that may in exceptional cases be taken must be between the buyer and the seller. T Bar C Cattle Co. (2013) Ltd. assumes no responsibility for any credit extended by the seller to the buyer. The buyer must look to the seller for fulfillment of all guarantees and representations made hereunder.

DELIVERY:

Every assistance will be given in getting your purchases home. Each animal becomes the risk of the purchaser as soon as sold.

PHONE, MAIL, WIRE BIDS:

Bidders unable to attend the sale may phone, wire or mail their bids and instructions to the sale manager, auctioneer or special representatives. Bids must be received in sufficient time prior to the sale.

INSURANCE:

We strongly recommend that insurance is purchased for full value.

ERRORS:

All announcements at sale time, written or oral, supersede any written material in the catalogue.

NOTES

Calum McGaffin**Lot 66**

8189 Guelph Line
Cambelville, ON L0P 1B0
C: 905-749-1988
E: calum_mcgauffin@hotmail.com

CJR Cattle Company**Lot 78**

Clinton Ostrander
7153 Mosside Line RR 4
Alvinston, ON N0N 1A0
C: 519-857-2971
E: cjrcattle@hotmail.com

Cuddy Farms**Lot 80 & 81**

John Flaherty
28429 Centre Road RR5
Strathroy, ON N7G 3H6
C: 519-870-8800
E: johnfl@cuddy.com

Dudgeon Cattle Co.**Lots 54-56**

Brian & Kim Dudgeon and Family
1128 Bruce Road 40
Dobbinton, ON N0H 1L0
P: 519-353-4014
C: 519-270-2500
E: dudgeongroup@gmail.com

First Line Angus**Lots 23, 23A, 24, 24A**

Will Stoneman, Kasey Whitwell
& Brian Whitwell
560 First Line RR 3
Hagersville, ON N0A 1H0
Will's Cell: 587-873-7257
Brian's Phone: 905-768-5148
E: k.whitwell@hotmail.com

Five R Farms**Lots 67 & 68**

Wilbert Rowntree
141 Townline Rd. West
Cayuga, ON N0A 1E0
P: 905-768-5471
E: wilrown@gmail.com

Gillco Farms**Lot 64 & 65**

Kevin & Kathy Gillham
8699 Conc 3 RR 1
Uxbridge, ON L9P 1R1
P: 905-852-6659
E: gillcofarms@ruralwave.ca

Harprey Farms**Lots 62 & 63**

Allan Hargrave, Don Hargrave
& Jarrett Hargrave
307483 Center Line A RR 2
Proton Station, ON N0C 1L0
P: 519-923-5192
C: 519-375-5541 - Allan
C: 519-375-1500 - Don
C: 519-374-5516 - Jarrett
E: harprey@gmail.com

JPD Angus**Lots 71 - 74**

Darryl & Lori Chalmers
2550 Line 4N
Oro-Medonte, ON L0L 2L0
Lori's Cell: 705-720-0829
Michaela's Cell: 705-720-0085
E: lori@chalmersinc.ca

Kemp Brothers**Lots 47-51**

Jeff and Dave Kemp
3340 Byers Rd
Blackstock, ON L0B 1B0
P: 905-986-9646
E: jeff.kemp@fcc-fac.ca

La Conquista Ranches**Lot 82 & 83**

Luis Burciaga
14-900 Village Lane
Okotoks, AB T1S 1Z6
Luis Burciaga: 403-863-5802
Ana Marroquin: 403-918-3797
E: lburciaga@hotmail.com

Leela Farms**Lot 26B, 75, 76 & 84**

John & Harry Leeflang
673 Drummond Conc 1
Perth, ON K7H 3C3
P: 613-267-4429
P: 613-267-7799
C: 613-812-4429
E: leelaholst@ripnet.com

Lynden Manor Farm**Lot 52 & 53**

Glen & Caroline Smith
Box 191
Carlisle, ON L0R 1H0
P: 416-526-5428
P: 905-690-6626
E: g.smith@merit-insurance.com

Maple Line Farm**Lots 57-59**

Ian and Tim Rudkin
3320 Bradburn Road
Blackstock, ON L0B 1B0
C: 905-718-5331 - Ian
C: 905-213-6518 - Tim
E: maplelinefarm@hotmail.ca

Meadow Bridge Angus**Lots 2-5**

JJ & Katie Deslippe
922580 Road 92 RR 4
St. Mary's, ON N4X 1C7
P: 519-275-1739
E: deslippe@quadro.net

Norfolk Cattle**Lots 6, 60 & 61**

Bryan Bonney and Dana Cadman
PO Box 86
Tillsonburg, ON N4G 4H3
Bryan: 519-550-4419
Dana: 519-495-2280
E: norfolkcattle@hotmail.com

North Perth Angus 2020**Lot 7 & 7A**

Ray and Evelene Weber
42292 Cty Road 7
Wingham, ON N0G 2W0
P: 519-291-8272
E: rayweber@wightman.ca

Rehorst Farms Ltd.**Lots 1, 8-22A, 25, 26A, 27-46, 79**

Adrian Rehorst
412 Conc. 8, RR 3
Teeswater, ON N0G 2S0
C: 519-357-7077
E: rehorst@wightman.ca

Van Esse Livestock**Lots 69 & 70**

Matt & Peter VanEsse
8101 Cedar Hedge Line,
Dover Centre, ON N0P 1L0
P: 519-436-5876
E: vanesse48@hotmail.com

**Return Undeliverable
Canadian Addresses To:**

T Bar C Cattle Co. Ltd.
Box 2330
Warman, SK S0K 4S0



**RETURN POSTAGE GUARANTEED
PORT DE RETOUR GARANTI**

Autumn

ANGUS CLASSIC

